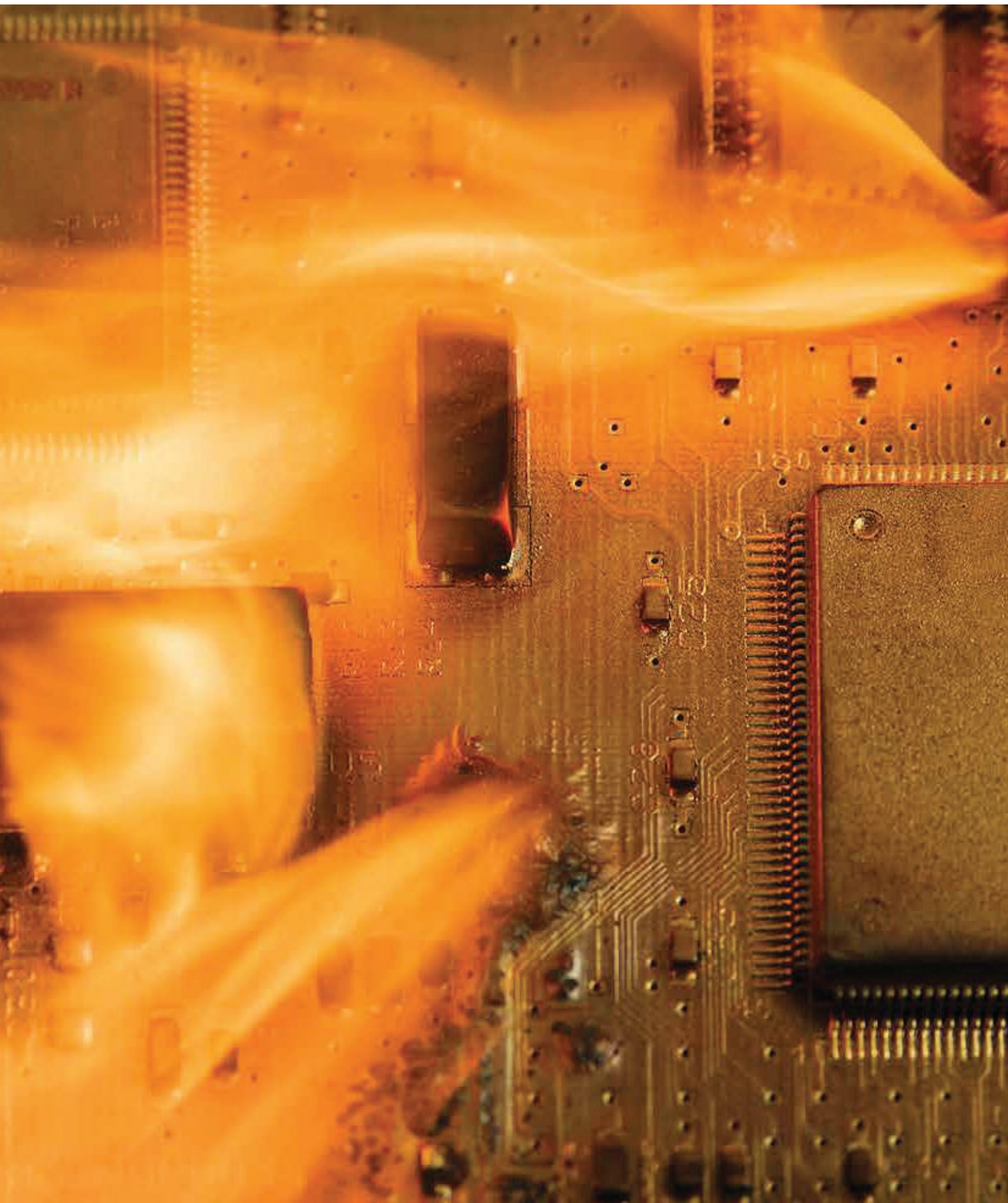




# BRUTAL ON FIRES, SAFE FOR THE ENVIRONMENT



**CEASEFIRE'S RANGE OF FLUOROKETONE (FK)  
FIREFIGHTING SOLUTIONS**





# FIGHTS FIRE, WHILE KEEPING THE PLANET SAFE

While fire extinguishants are imperative for controlling fire episodes and saving lives & properties, their detrimental impact on environment has consistently raised concerns among environmentalist, sustainability advocates and conscious users alike.

Pioneering next generation firefighting technologies and furthering the cause of bringing green firefighting solutions to the world, Ceasefire has always invested in technologies that are not just potent on fires but also gentle on the environment.

Ceasefire's range of fire fighting solutions based on Fluoroketone (FK) gas is among the most potent yet environment friendly solutions with a Global Warming Potential (GWP) of less than 1 and a Ozone Depletion Potential (ODP) of 0.

Ceasefire's range of FK based extinguishers and systems are non-flammable, non-corrosive, residue-free and come with a high dielectric strength making them safe to be administered on high-value and sensitive electronic equipment.

Since FK causes no collateral damage and is extremely potent on fire, it is ideal to be used in premises like data centres, banks, hospitals, museums etc.

In purview of the recent F-gas regulations, which aims at a gradual reduction and eventual phasing out of HFCs, our FK based range, which does not fall under the purview of this regulation, offers an ideal long-term solution.

# CEASEFIRE'S FLUOROKETONE (FK) FIREFIGHTING RANGE



Fire Extinguishers  
(Portable Range)



Automatic Fire Extinguishers  
(Wall Mounted Range)



Automatic Fire Extinguishers  
(Ceiling Mounted Range)



Ceasefire Quick Response System  
(In-Panel Tube Based Suppression Systems)



Ceasefire Mini  
(Micro-Environment Fire Suppression)



Atom X  
(Retrofittable Fire Suppression Systems)





# FIRE EXTINGUISHERS

## PORTABLE RANGE

Research shows that short circuits in the electrical mains or in sensitive electronic equipment such as computers, server racks, CNC machines, etc. are the most common cause of fire in work spaces. While powder-based extinguishers can certainly defeat these fires, they cause serious collateral damage.

built to not only put out fires, but save sensitive electronic equipment too. Powered by one of the cleanest, most powerful extinguishing agents on the planet, these extinguishers are extremely lightweight, yet are power-packed with an immense throw that penetrates even the finest mesh and spaces.

That's where Ceasefire's Fluoroketone (FK) based Extinguishers come in. These extinguishers are

IS: 15683



CM/L-8886112



FIGHTS CLASS

A B C ⚡

STANDARDS

IS15683 PED

CERTIFICATIONS



CERTIFYING BODY



SIZES AVAILABLE:

Fire Extinguishers

2 KG

4 KG

6 KG

# FEATURES AND BENEFITS



## Safe on Electronic equipment:

Clean gas FK based extinguishers leave no residue and can be used on electronic equipment.



## Lightweight:

Extremely lightweight, yet packed with tremendous power and throw, to penetrate past even the finest grills and meshes.



## Simplicity in Handling:

The easy grip plastic handle aids simplicity in handling.



## Pressure Gauge:

The state-of-the-art pressure gauge can be tested onsite, using a special magnet to ensure that it is working perfectly and is 100% accurate.



## World Class Quality:

Comes with ISO 9001 and CE certification, and conforms to ISI standards. Comprehensive Helium Tests and Leak Tests also guarantee that the products you buy are manufactured according to the world's most stringent quality standards.



## 6 year Warranty:

The Ceasefire Fluoroketone Extinguisher come with 6 year warranty ensuring complete peace of mind.



ABC F

## Types of Fire:

Fights Class A, B & Electrically Started Fire.



## Standards:

Virtually every Ceasefire extinguisher has ISO 9001 and CE certifications, and conforms to ISI standards.



## Safe on Environment:

Fluoroketone (FK) gas is among the most potent yet environment friendly solutions with a Global Warming Potential (GWP) of less than 1 and a Ozone Depletion Potential (ODP) of 0.



F Gas

## Free from F-gas Regulations:

FK being outside the purview of F-gas regulation gives freedom of operation to businesses and offers a long term trade solution.



# TECHNICAL SPECIFICATIONS:

Nomenclature	Fire Ext 2Kg MS SP Red	Fire Ext 4Kg MS SP Red	Fire Ext 6Kg MS SP Red
Product Code	CF-001462	CF-001469	CF-001470
Stored Pressure / Cartridge	Stored Pressure	Stored Pressure	Stored Pressure
Agent	Fluoroketone (FK-5-1-12)	Fluoroketone (FK-5-1-12)	Fluoroketone (FK-5-1-12)
Bulk Range of Discharge (BRD)	2 meters	2 meters	3 meters
Agent Category	Clean Agent	Clean Agent	Clean Agent
Certification Type	PED, IS15683	PED, IS15683	PED, IS15683
BIS	Yes	Yes	Yes
PED	Yes	Yes	Yes
Gross Weight (approx.)	3.5 Kg	6.35 Kg	9 Kg
Net Mass (approx.)	2 kg	4 kg	6 kg
Approx. Height Of Fire Ext.	370 mm	440 mm	485 mm
Discharge Mechanism	Thumb Triggered	Squeeze Grip	Squeeze Grip
Applicable On Fires	A, B, C, & Electrical Started Fire	A, B, C, & Electrical Started Fire	A, B, C, & Electrical Started Fire
Fire Ratings	1A   21B	1A   34B	2A   55B
Can Construction	Deep Drawn And MIG Welded	Deep Drawn And MIG Welded	Deep Drawn And MIG Welded
Valve / Cap Construction	Forging And Machining	Forging And Machining	Forging And Machining
Schraeder Valve	No	No	No
Pressure Relief Valve	No	No	No
External Coating	Epoxy Polyester Powder	Epoxy Polyester Powder	Epoxy Polyester Powder
Helium Leak Detection Testing	Yes	Yes	Yes
Warranty In Years	6	6	6
G.A. Drawing Number	CF/SP-CA2LB-W/GA/03	CF/SP-CA4LB-W/GA/03	CF/SP-CA6LB-W/GA/03
Working Pressure	10 Bar	10 Bar	10 Bar
Dia. Of Shell (OD)	108 mm	140 mm	160 mm
Operating Temperature	-30° C to +60° C	-30° C to +60° C	-30° C to +60° C
Hydrostatic Test Pressure	35 Bar	35 Bar	35 Bar
Cylinder Material Spec.	Steel CR2(DC01)	Steel CR2(DC01)	Steel CR2(DC01)
Body Thickness	1.4 mm	1.2 mm	1.4 mm

Please check the product specifications at the time of placing your order from our website (address of which is given at the end of this catalogue). Specifications can change without notice due to our continuous R&D and product improvisation initiatives.



# APPLICATION AREAS



Hospitals



Offices



Spas and Gyms



Hotels and Restaurants



Banks and Financial Institutions



Apartments and Villas

# CEASEFIRE FK RANGE



# AUTOMATIC FIRE EXTINGUISHERS

## WALL MOUNTED RANGE

Ceasefire's Wall Mounted, Automatic Fire Extinguishers address two simple problems at the same time; first of fire safety and second of space crunch. Being an automatic extinguisher it is ideal for spaces like small production units, offices, boats and engine compartments that are not just prone to fire but also have limited space, where installing an extinguisher can be a challenge.

Being wall mounted units, they are able to put out fires in areas that are beyond the reach of normal fire extinguishers.

Ceasefire Automatic Extinguishers detect the rising temperature of the area and activates automatically, even when there is no one present, ensuring that the fire is brought under control early and efficiently.

Ceasefire Wall Mounted Extinguishers detect the rising temperature of the area and activate automatically. Being Fluoroketone (FK) based extinguishers these are absolutely safe to be used on electronics and sensitive equipment.



FIGHTS CLASS:

A B C ⚡

CERTIFICATIONS:

CE<sub>1128</sub> UK CA

SIZES AVAILABLE:

Wall Mounted	1 KG	1.5 KG	2 KG	2.5 KG	4 KG	6 KG	9 KG
--------------	------	--------	------	--------	------	------	------

# FEATURES AND BENEFITS



**Self-Actuated:**

The automatic extinguishers detect fires and actuate automatically and require no human interference.



**Pressure Gauge:**

The state-of-the-art pressure gauge can be tested onsite, using a special magnet to ensure that it is working perfectly and is 100% accurate.



**6 year Warranty:**

The Ceasefire Automatic Extinguishers come with 6 year warranty ensuring complete peace of mind.



**Works on all Classes of Fire:**

The automatic extinguishers can be used on any kind of fire, making it a truly versatile firefighter.



**Safe on Electronic equipment:**

Clean gas FK based automatic extinguishers leave no residue and are safe to be used on electronic equipment.



**Safe on Environment:**

Fluoroketone (FK) gas is among the most potent yet environment friendly solutions with a Global Warming Potential (GWP) of less than 1 and a Ozone Depletion Potential (ODP) of 0.



**Free from F-gas Regulations:**

FK being outside the purview of F-gas regulation gives freedom of operation to businesses and offers a long term trade solution.



# TECHNICAL SPECIFICATIONS:

Nomenclature	Automatic Fire Ext 1Kg MS SP Red	Automatic Fire Ext 1.5Kg MS SP Red	Automatic Fire Ext 2Kg MS SP Red	Automatic Fire Ext 2.5Kg MS SP Red	Automatic Fire Ext 4Kg MS SP Red	Automatic Fire Ext 6Kg MS SP Red	Automatic Fire Ext 9Kg MS SP Red
Product Code	CF-001411	CF-001412	CF-001413	CF-001414	CF-001415	CF-001416	CF-001417
Capacity	1KG	1.5KG	2KG	2.5KG	4KG	6KG	9KG
Agent	FK-5-1-12	FK-5-1-12	FK-5-1-12	FK-5-1-12	FK-5-1-12	FK-5-1-12	FK-5-1-12
PED	Yes	Yes	Yes	Yes	Yes	Yes	Yes
Propellant	Nitrogen	Nitrogen	Nitrogen	Nitrogen	Nitrogen	Nitrogen	Nitrogen
Working Pressure	10 Bar	10 Bar	10 Bar	10 Bar	10 Bar	10 Bar	10 Bar
Maximum Volume Covered	1.4 m <sup>3</sup>	2.1 m <sup>3</sup>	2.8 m <sup>3</sup>	3.5 m <sup>3</sup>	5.7 m <sup>3</sup>	8.5 m <sup>3</sup>	12.8 m <sup>3</sup>
Discharge Mechanism	Automatic QBD*	Automatic QBD*	Automatic QBD*	Automatic QBD*	Automatic QBD*	Automatic QBD*	Automatic QBD*
Operating Temp.	-30°C to +60°C	-30°C to +60°C	-30°C to +60°C	-30°C to +60°C	-30°C to +60°C	-30°C to +60°C	-30°C to +60°C
Cylinder Material	Mild Steel CR2 Grade	Mild Steel CR2 Grade	Mild Steel CR2 Grade	Mild Steel CR2 Grade	Mild Steel CR2 Grade	Mild Steel CR2 Grade	Mild Steel CR2 Grade
Can Construction	Deep Drawn & MIG Welded	Deep Drawn & MIG Welded	Deep Drawn & MIG Welded	Deep Drawn & MIG Welded	Deep Drawn & MIG Welded	Deep Drawn & MIG Welded	Deep Drawn & MIG Welded
Valve/Cap Construction	Forging & Machining	Forging & Machining	Forging & Machining	Forging & Machining	Forging & Machining	Forging & Machining	Forging & Machining
External Coating	Epoxy Polyester Powder	Epoxy Polyester Powder	Epoxy Polyester Powder	Epoxy Polyester Powder	Epoxy Polyester Powder	Epoxy Polyester Powder	Epoxy Polyester Powder
Warranty in Years	6	6	6	6	6	6	6
Height of Fire Ext. (approx)	330 mm	350 mm	350 mm	290 mm	396 mm	446 mm	577 mm
Dia. of Shell (OD)	86.5 mm	108 mm	108 mm	140 mm	140 mm	160 mm	175 mm
Gross Weight (approx.)	1.8 kg	2.8 kg	3.3 kg	4.1 kg	6.0 kg	8.7 kg	12.9 kg
Empty Weight of Extinguisher	0.8 kg	1.3 kg	1.3 kg	1.6 kg	1.9 kg	2.6 kg	3.8 kg
Hydrostatic Test Pressure	30 Bar	30 Bar	30 Bar	30 Bar	30 Bar	30 Bar	30 Bar
Body Thickness	1.6 mm	1.6 mm	1.6 mm	1.6 mm	1.6 mm	1.6 mm	2 mm

Please check the product specifications at the time of placing your order from our website (address of which is given at the end of this catalogue). Specifications can change without notice due to our continuous R&D and product improvisation initiatives.

## \*QUARTZOID BULB KEY

● 57°C / 135°F

● 68°C / 155°F

● 79°C / 174°F

● 93°C / 200°F

● 141°C / 286°F

● 182°C / 360°F

● 227°C / 440°F

# APPLICATION AREAS



## Boats

Highly inflammable fuel and an over worked boat engine can be fire's favorite destination. But the space crunch in boats does not allow the liberty to place extinguishers or any suppression systems. And when in action, these valuable possessions may be far from the help site in case a fire arises.

Ceasefire's wall mounted automatic extinguishers are an ideal fire safety solution for such premises as they require no floor space at-all and can automatically detect and extinguish fire.

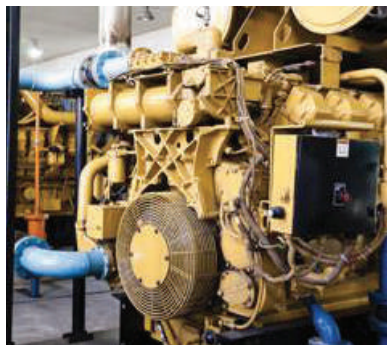
## Engines

An engine is a power house laden with fuel and fire, a slight oversight may turn fatal in no time.

While an engine may not have enough space for an extinguishing system,

its all the more imperative to have one.

Ceasefire's wall mounted automatic extinguishers are an ideal fire safety solution for such premises as they require no floor space at-all and can automatically detect and extinguish fire.



## Garment Stores and Godowns:

Fires in deserted areas such as warehouses, and storage areas, or in garment stores where there is a lot of material to fuel the fire on can be undetected till all the goods stored inside are completely destroyed. These fires can easily spread to adjacent storage areas. The Modular Suppression System is ideal to combat these blazes, taking on the fire on its own.



# AUTOMATIC FIRE EXTINGUISHERS

## CEILING MOUNTED RANGE

There will always be areas in a workplace where human traffic is low and therefore the chances of detecting a fire early, minimal. Often these are also areas which contain high volume of flammable materials, not reachable by manually operated extinguishers.

The best examples of such places would be high chemical stacks, warehouses and server rooms. The answer to protect such spaces lies in Ceasefire Automatic Fire Extinguishers. Because these extinguishers are ceiling mounted, they are able to put out fires in areas

that are beyond the reach of normal fire extinguishers. Ceasefire Ceiling Mounted Extinguishers detect the rising temperature of the area and activate automatically, even when there is no one present, ensuring that the fire is brought under control early and efficiently.

Ceasefire Ceiling Mounted Extinguishers detect the rising temperature of the area and activate automatically, even when there is no one present, ensuring that the fire is brought under control early and efficiently.



**FIGHTS CLASS:**  
A B C ⚡

**CERTIFICATIONS:**  
CE 1128 UK CA

**SIZES AVAILABLE:**

Ceiling Mounted	5 KG	10 KG
-----------------	------	-------



# FEATURES AND BENEFITS



## Complete System:

The system has an in-built detection device that self detects and auto extinguishes fire without any human intervention.



## Easy to Install:

Retrofittable system and can be installed with least amount of structural changes in a premises.



## Requires Minimal Fittings:

Does not require an extensive network of pipes, fitting and ducts for installation.



## Tamper Proof Design:

Being ceiling mounted the system is tamper proof.



## Highly Cost Effective:

Since the system does not require extensive fittings it works out to be price competitive.



## Saves Space:

Agent cylinders are ceiling mounted units that do not require any floor space.



## Container Sizes:

The system's agent containers are available in 5 and 10 kg variants to suit diverse kinds of premises.



## 6 year Warranty:

The Ceasefire Automatic Extinguishers come with 6 year warranty ensuring complete peace of mind.



## Safe on Electronic Equipment:

Virtually every Ceasefire extinguisher has ISO 9001 and CE certifications, and conforms to ISI standards.



## Safe on Environment:

Fluoroketone (FK) gas is among the most potent yet environment friendly solutions with a Global Warming Potential (GWP) of less than 1 and a Ozone Depletion Potential (ODP) of 0.



## Free from F-gas Regulations:

FK being outside the purview of F-gas regulation gives freedom of operation to businesses and offers a long-term trade solution.



# TECHNICAL SPECIFICATIONS:

Nomenclature	Ceiling Mounted 5Kg MS SP Red	Ceiling Mounted 10Kg MS SP Red
Product Code	CF-001337	CF-001338
Stored Pressure / Cartridge	Stored Pressure	Stored Pressure
Agent	Fluoroketone (FK-5-1-12)	Fluoroketone (FK-5-1-12)
Agent Category	Clean Agent	Clean Agent
Certification Type	PED BSI TESTED	PED BSI TESTED
PED	Yes	Yes
Gross Weight (approx.)	7.45 kg	14.28 kg
Net Mass (approx.)	5 kg	10 kg
Height of Fire Ext. (approx) with base	333 mm	363 mm
Discharge Mechanism	Automatic QBD*	Automatic QBD*
Applicable on Fires	A, B, C, & Electrical Started Fire	A, B, C, & Electrical Started Fire
Can Construction	Deep Drawn And MIG Welded	Deep Drawn And MIG Welded
Valve / Cap Construction	Forging And Machining	Forging And Machining
Maximum Area / Volume Covered	7 m <sup>3</sup>	15 m <sup>3</sup>
External Coating	Epoxy Polyester Powder	Epoxy Polyester Powder
Helium Leak Detection Testing	Yes	Yes
Warranty in Years	6	6
G.A. Drawing Number	CF/SP- 5CM/GA/01	CF/SP- 10CM/GA/01
Working Pressure	10 BAR	10 BAR
Dia. Of Shell (OD)	240 mm	300 mm
Operating Temperature	-30° C to +60° C	-30° C to +60° C
Hydrostatic Test Pressure	35 Bar	35 Bar
Cylinder Material Spec.	Steel CR2(DC01)	Steel CR2(DC01)
Body Thickness	1.6 mm	2.0 mm

Please check the product specifications at the time of placing your order from our website (address of which is given at the end of this catalogue). Specifications can change without notice due to our continuous R&D and product improvisation initiatives.

## \*QUARTZOID BULB KEY

● 57°C / 135°F

● 68°C / 155°F

● 79°C / 174°F

● 93°C / 200°F

● 141°C / 286°F

● 182°C / 360°F

● 227°C / 440°F

# APPLICATION AREAS

Ceasefire Modular Suppression System addresses the fire safety requirements of a diverse kind of premises. Its easy to install modular units can easily be fitted into any kind of area and its effective detection and extinguishing action can challenge any kind of fire without the need of human intervention.



## Factories and Manufacturing Set-ups:

A large number of production lines require the presence of fire for manufacturing. These factories face a higher fire risk than others. The Modular Suppression System can quickly launched at these fires to battle the flames while people vacate the premises.



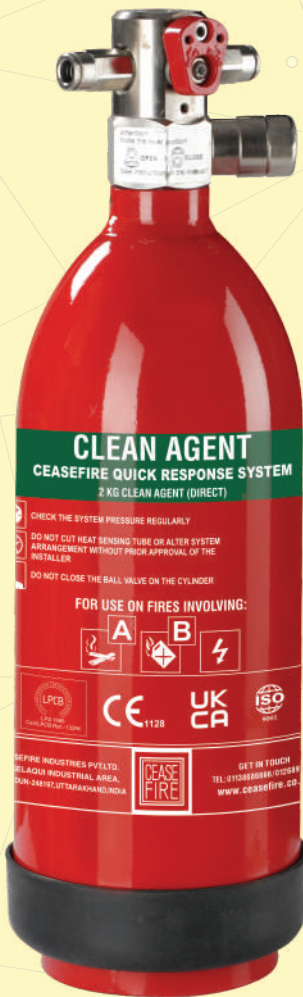
## Garment Stores and Godowns:

Fires in deserted areas such as warehouses, storage areas, or in garment stores where there is a lot of material to fuel the fire can be left undetected till all the goods stored inside are completely destroyed. These fires can easily spread to adjacent storage areas. The Modular Suppression System is ideal to combat these blazes, taking on the fire on its own.

## Schools and Hospitals:

Schools are filled with little children, unable to fight fires and prone to panic. While in the case of hospitals, the patients are too frail to engage in firefighting. Placed at strategic places on the premises, the Modular Suppression System forms a first layer of protection and fights fires on its own. Allowing the staff in both institutions to focus their attention on the people and not the flames.





# CEASEFIRE QUICK RESPONSE SYSTEM

## IN-PANEL TUBE BASED SUPPRESSION SYSTEM

Ceasefire's In-Panel Tube-Based System (CQRS) is an advanced firefighting solution which combines ground-breaking technology with functional simplicity to keep what's precious safe.

The most prominent feature of CQRS is the specially designed heat-sensitive pneumatic polymer tubing. It's connected at one end to a Ceasefire extinguishing agent container, while the rest of it runs unobtrusively throughout the area at risk. When the flame comes in contact with the

heat-sensitive tubing and reaches a temperature of 80°- 90°C, the tube bursts open at that exact spot and forms a miniature nozzle. The pneumatic mechanism triggers the valve of the extinguisher and the extinguishing agent is released and sprayed onto the flame, dousing the fire instantaneously.

Because the extinguishing agent used is a clean gas, this system is effective to combat any kind of fire. This advanced technology makes this system entirely self-activated, and requires no human intervention once it has been installed.

**CERTIFIED BY LPCB TO  
LPS 1666 STANDARD**



### CERTIFICATIONS:



### SIZES AVAILABLE: DIRECT

Fluoroketone (Low Pressure)	2 KG	3 KG	4 KG	6 KG	9 KG
-----------------------------	------	------	------	------	------

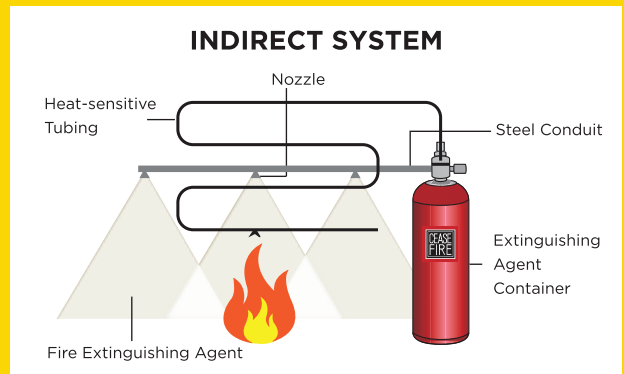
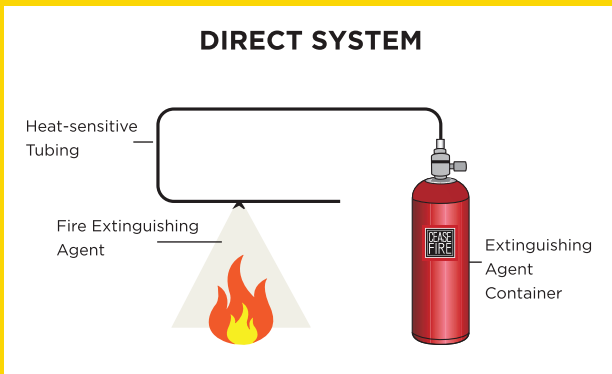
### SIZES AVAILABLE: INDIRECT

Fluoroketone (Low Pressure)	2 KG	4 KG	6 KG	9 KG
-----------------------------	------	------	------	------

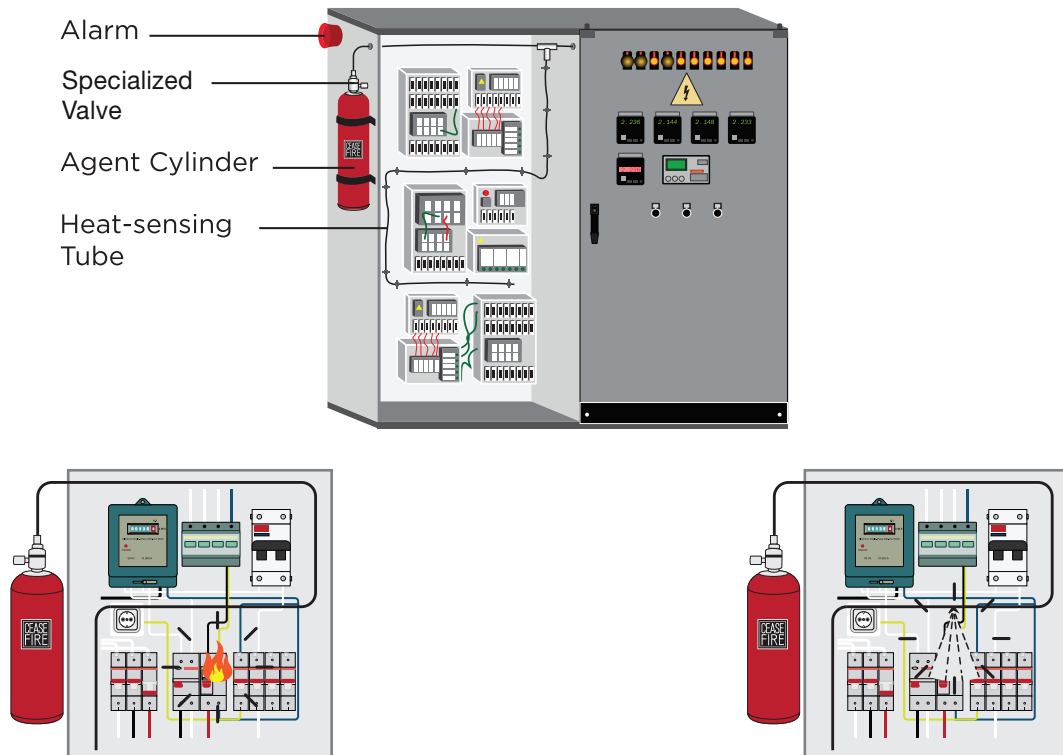
## Types of Systems:

The heat-sensitive tubing acts as an extinguishing agent delivery system. The tube bursts at the point where the fire is detected, forms a miniature nozzle and sprays the extinguishing agent. Ideal for places where fires can break out in localised areas. This is available in low-pressure and high-pressure systems.

In the Indirect system, the heat-sensitive tubing only acts as a detection device. The extinguishing agent is delivered through a steel conduit and sprayed across the entire area through strategically placed nozzles. Ideal for areas where there is a chance of fires igniting at multiple points. This is available in low-pressure and high-pressure systems.





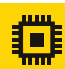








## The Complete System:



The heat-sensitive polymer tube is connected to an extinguishing agent container via a pressure release valve. When a fire breaks out, it results in a drastic increase in temperature. When it reaches 180° - 200°C, the heat-sensitive

tube bursts and activates the valve which in turn releases the extinguishing agent through the direct or indirect line. The extinguishing agent is sprayed out of the container, flooding the micro-environment and instantly extinguishing the flame.

# FEATURES AND BENEFITS

- 
**Classification:**  
 Works on class A, B, C fires and fires involving electrically-charged devices. Effective on a wide range of flammable and combustible materials.
- 
**Self-actuated:**  
 Does not require any power supply and will function normally in the event of a power outage.
- 
**Electronics-Friendly:**  
 Shown to be electrically non-conductive and is safe for electrically charged equipment. Fluoroketone is kinder on electronics than the majority of extinguishing agents available in the market.
- 
**No Clean-up Required After Discharge:**  
 After a discharge, the extinguishing agent can be removed by simple ventilation.
- 
**Residue-free:**  
 Based on clean gases the system won't leave behind oily residue, particulates or corrosive material.
- 
**24-hour Protection:**  
 Automatic detection and actuation ensures that fire protection is always 'on'.
- 
**Flexible Design:**  
 Flexible tubing allows protection in areas that are difficult to access and may not be able to accommodate any other means of detection.
- 
**International Quality Standards:**  
 Fluoroketone based CQRS is LPCB approved to LPS 1666 standard.
- 
**Rugged System:**  
 Can withstand even harsh conditions where other types of detection systems might be rendered inadequate.
- 
**Safe on Environment:**  
 Fluoroketone (FK) gas is among the most potent yet environment friendly solutions with a Global Warming Potential (GWP) of less than 1 and a Ozone Depletion Potential (ODP) of 0.
- 
**Free from F-gas Regulations:**  
 FK being outside the purview of F-gas regulation gives freedom of operation to businesses and offers a long term trade solution.



# TECHNICAL SPECIFICATIONS:

Nomenclature	UOM	2Kg FK-5-1-12 DLP system	3Kg FK-5-1-12 DLP system	4Kg FK-5-1-12 DLP system	6Kg FK-5-1-12 DLP system	9Kg FK-5-1-12 DLP system
<b>Product Code</b>	—	CF-00792A	CF-00792B	CF-00792C	CF-001358	CF-001360
<b>Capacity of Agent</b>	KG	2	3	4	6	9
<b>Agent</b>	—	Fluoroketone (FK-5-1-12)	Fluoroketone (FK-5-1-12)	Fluoroketone (FK-5-1-12)	Fluoroketone (FK-5-1-12)	Fluoroketone (FK-5-1-12)
<b>Certification</b>	—	PED UKCA-PED LPS 1666-LPCB	PED UKCA-PED LPS 1666-LPCB	PED UKCA-PED LPS 1666-LPCB	PED UKCA-PED	PED UKCA-PED
<b>Diameter of Shell</b>	MM	108	140	140	160	175
<b>Total Height (approx.)</b>	MM	360	417	417	462	592
<b>MOC of Shell</b>	—	M.S. Sheet (CRCA grade 2)	M.S. Sheet (CRCA grade 2)	M.S. Sheet (CRCA grade 2)	M.S. Sheet (CRCA grade 2)	M.S. Sheet (CRCA grade 2)
<b>Mini. Wall Thickness</b>	MM	1.6	1.6	1.6	1.6	1.6
<b>Test Pressure</b>	BAR	35	35	35	35	35
<b>Anti-Corrosive Treatment</b>	—	Outer surfaces are EP Powder coated having Thickness 50 Micron Min. RAL Shade 3000	Outer surfaces are EP Powder coated having Thickness 50 Micron Min. RAL Shade 3000	Outer surfaces are EP Powder coated having Thickness 50 Micron Min. RAL Shade 3000	Outer surfaces are EP Powder coated having Thickness 50 Micron Min. RAL Shade 3000	Outer surfaces are EP Powder coated having Thickness 50 Micron Min. RAL Shade 3000
<b>Service Pressure</b>	BAR	15	15	15	15	15
<b>Type of Operating Mechanism</b>	—	Automatic	Automatic	Automatic	Automatic	Automatic



Nomenclature	UOM	2Kg FK-5-1-12 DLP system	3Kg FK-5-1-12 DLP system	4Kg FK-5-1-12 DLP system	6Kg FK-5-1-12 DLP system	9Kg FK-5-1-12 DLP system
Type of Pressure Gauge	—	Magnetic Bourdon Tube Type	Magnetic Bourdon Tube Type	Magnetic Bourdon Tube Type	Magnetic Bourdon Tube Type	Magnetic Bourdon Tube Type
Type of Dis. Fitting & Length	MM	NA	NA	NA	NA	NA
Type of valve	—	Direct Low Pressure Valve (DLP) with two outlet	Direct Low Pressure Valve (DLP) with two outlet	Direct Low Pressure Valve (DLP) with two outlet	Direct Low Pressure Valve (DLP) with two outlet	Direct Low Pressure Valve (DLP) with two outlet
Length of Heat Sensing tube	METER	10m long tube from each valve outlet to the end of single detection tube run at each outlet of DLP valve. Up to 4 branches of heat detection tube can be connected to a single container using tee connectors subject to each branch length do not exceed 10m from each valve outlet.			10m long tube from each valve outlet to the end of single detection tube run at each outlet of DLP valve. Up to 4 branches of heat detection tube can be connected to a single container using tee connectors subject to each branch length do not exceed 12m from each valve outlet.	
Size of equipment /enclosure can be protected by one system	—	The volume of largest enclosure within the panel to be protected shall not exceed 2 cubic meters.			The volume of largest enclosure within the panel to be protected shall not exceed 3 cubic meters.	
Maximum number of compartments to be protected by one end of DLP valve.	—	There is no limitation on number of compartments to be protected however, the designer should follow the maximum tube length and volume limits as specified in points no. 5 & 6 above.				
Maximum distance of the detector tube from potential secondary fire sources	MM	200mm (for cabinets with ventilations), 600mm (for cabinets without ventilation)				
Maximum free vent area of enclosure. (natural air flow)	Cm <sup>2</sup>	At High level - 500 At low level - 157	At High level - 500 At low level - 250	At High level - 500 At low level - 500	At High level - 500 At low level - 500	At High level - 500 At low level - 500
Maximum free vent area of enclosure. (forced air flow, high, outward)	Cm <sup>2</sup>	At High level - 500 At low level - 250	At High level - 500 At low level - 500	At High level - 500 At low level - 500	At High level - 600 At low level - 600	At High level - 600 At low level - 600
Maximum Air ventilation rate (forced air flow, high level, outward)	m <sup>3</sup> /sec	0.025 to 0.035	0.05 to 0.07	0.05 to 0.07	0.05 to 0.07	0.05 to 0.07
Maximum free vent area of enclosure. (forced air flow, Low level, inward)	Cm <sup>2</sup>	At High level - 250 At low level - 250	At top - 500 At Bottom - 250	At top - 500 At Bottom - 250	At top - 600 At Bottom - 300	At top - 600 At Bottom - 300
Maximum Air ventilation rate (forced air flow, low level, inward)	m <sup>3</sup> /sec	0.02 to 0.25	0.025 to 0.035	0.025 to 0.035	0.025 to 0.035	0.025 to 0.035
Heat sensing tube pressure operation range.	°C	9-23 Bar @ 20°C	9-23 Bar @ 20°C	9-23 Bar @ 20°C	9-23 Bar @ 20°C	9-23 Bar @ 20°C

# CEASEFIRE FK RANGE

Nomenclature	UOM	2Kg FK-5-1-12 DLP system	3Kg FK-5-1-12 DLP system	4Kg FK-5-1-12 DLP system	6Kg FK-5-1-12 DLP system	9Kg FK-5-1-12 DLP system
Operating Temperature Range	°C	-20°C to 60°C	-20°C to 60°C	-20°C to 60°C	-20°C to 60°C	-20°C to 60°C
Applicable to Type of Fire	—	A, B, & Electrical Started Fire	A, B, & Electrical Started Fire	A, B, & Electrical Started Fire	A, B, & Electrical Started Fire	A, B, & Electrical Started Fire
Product Warranty	YEARS	1	1	1	1	1

Please check the product specifications at the time of placing your order from our website (address of which is given at the end of this catalogue). Specifications can change without notice due to our continuous R&D and product improvisation initiatives.



# TECHNICAL SPECIFICATIONS:

Nomenclature	UOM	2kg- FK 5-1-12 clean agent with (ILP) with integrated ball valve.	4kg- FK 5-1-12 clean agent with (ILP) with integrated ball valve .	6kg- FK 5-1-12 clean agent with (ILP) with integrated ball valve.	9kg- FK 5-1-12 clean agent with (ILP) with integrated ball valve.
Product Code	—	CF-001355	CF-001357	CF-001359	CF-0013561
Capacity of Agent	KG	2 (-5%)	4 (-5%)	6 (-5%)	9 (-5%)
Agent	—	Fluoroketone (FK 5-1-12)	Fluoroketone (FK 5-1-12)	Fluoroketone (FK 5-1-12)	Fluoroketone (FK 5-1-12)
Certification	—	PED UKCA-PED BSI TESTED	PED UKCA-PED BSI TESTED	PED UKCA-PED BSI TESTED	PED UKCA-PED BSI TESTED
Diameter of Shell	MM	108	140	160	175
Total Height (approx.)	MM	403	465	510	635
MOC of Shell	—	M.S. Sheet (CRCA )	M.S. Sheet (CRCA )	M.S. Sheet (CRCA )	M.S. Sheet (CRCA )
Mini. Wall Thickness	MM	1.6	1.6	1.6	1.6
Test Pressure	BAR	35	35	35	35
Anti-Corrosive Treatment	—	Outer surfaces are EP Powder coated having Dry Film Thickness 50 Micron (Min.) RAL Shade 3000	Outer surfaces are EP Powder coated having Dry Film Thickness 50 Micron (Min.) RAL Shade 3000	Outer surfaces are EP Powder coated having Dry Film Thickness 50 Micron (Min.) RAL Shade 3000	Outer surfaces are EP Powder coated having Dry Film Thickness 50 Micron (Min.) RAL Shade 3000
Service Pressure	BAR	15	15	15	15
Type of Operating Mechanism	—	Automatic / Manual	Automatic / Manual	Automatic / Manual	Automatic / Manual
Type of Pressure Gauge	—	Magnetic Bourdon Tube Type	Magnetic Bourdon Tube Type	Magnetic Bourdon Tube Type	Magnetic Bourdon Tube Type
Type of Dis. pipe & Length	MM	Delivery pipe OD 10MM x 1MM Wall Thk. 5M	Delivery pipe OD 10MM x 1MM Wall Thk. 8 M	Delivery pipe OD 10MM x 1MM Wall Thk. 10M (Stright Line) 15 M (Ring Form)	Delivery pipe OD 10MM x 1MM Wall Thk. 12 M (Stright Line) 20 M (Ring Form)
No of Max. nozzles	—	2	4	6	8

# TECHNICAL SPECIFICATIONS:

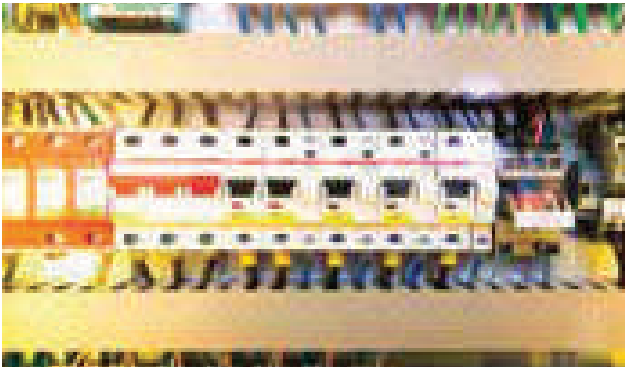
Nomenclature	UOM	2kg- FK 5-1-12 clean agent with (ILP) with integrated ball valve.	4kg- FK 5-1-12 clean agent with (ILP) with integrated ball valve .	6kg- FK 5-1-12 clean agent with (ILP) with integrated ball valve.	9kg- FK 5-1-12 clean agent with (ILP) with integrated ball valve.
Type of valve	—	Indirect Low Pressure Valve (ILP) with Single outlet	Indirect Low Pressure Valve (ILP) with Single outlet	Indirect Low Pressure Valve (ILP) with Single outlet	Indirect Low Pressure Valve (ILP) with Single outlet
Operating Temperature Range	°C	-20 to 60	-20 to 60	-20 to 60	-20 to 60
Applicable to Type of Fire	—	A, B, & Electrical Started Fire	A, B, & Electrical Started Fire	A, B, & Electrical Started Fire	A, B, & Electrical Started Fire
Product Warranty	YEAR	1	1	1	1

\*Test Completed VC Pending.

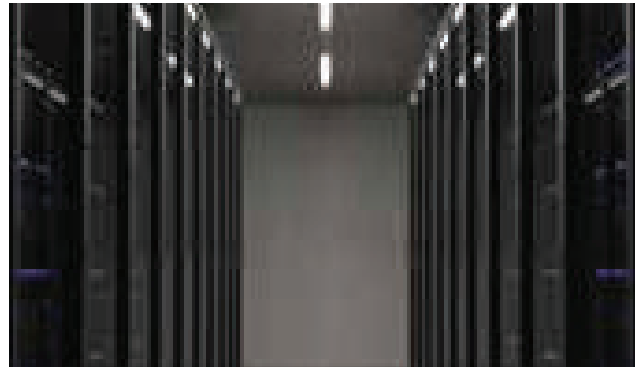
Please check the product specifications at the time of placing your order from our website (address of which is given at the end of this catalogue). Specifications can change without notice due to our continuous R&D and product improvisation initiatives.



# APPLICATION AREAS



Electrical Panels



Server Racks



Diagnostic Machines



Gensets



Electrical Cabinets



Mobile Tower Switching Areas



Printing Press



UPS Rooms

# CEASEFIRE FK RANGE



Adaptive Design



Intuitive Design

# CEASEFIRE MINI

## MICRO-ENVIRONMENT FIRE SUPPRESSION

Introducing the Ceasefire Mini, the biggest, smallest suppression system in town; and proof that some of the best things do come in small packages.

The Mini is a state-of-the-art micro-environment suppression system designed by Ceasefire. The size of your palm, it sits snugly inside small enclosed spaces that are vulnerable to fire. When the temperature of the micro-environment exceeds a preset limit, the Mini swings into action and automatically extinguishes the fire.

Place it inside your server. Pop it in the fuse box. The Mini fits anywhere, and protects everywhere!

### Evolved To Protect

At Ceasefire, our products have evolved to take the fight to the fire. First, came simple home extinguishers. Then, complete flooding systems followed by advanced suppression systems. And now, the Mini, the smallest firefighter that takes on a fire the moments it starts.



**bsi.**  
Tested

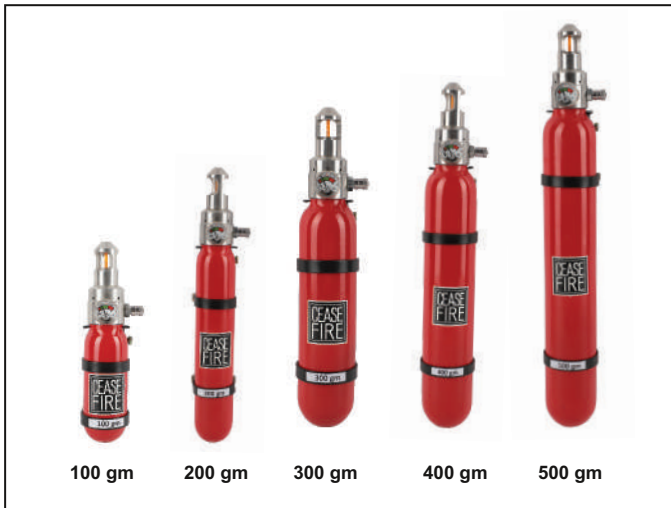


#### SIZES AVAILABLE:

Mini	100 GM	200 GM	300 GM	400 GM	500 GM
------	--------	--------	--------	--------	--------

# TYPES OF CEASEFIRE MINI

Ceasefire has designed a Mini to protect practically every kind of micro-environment, including those that cannot be reached by humans.

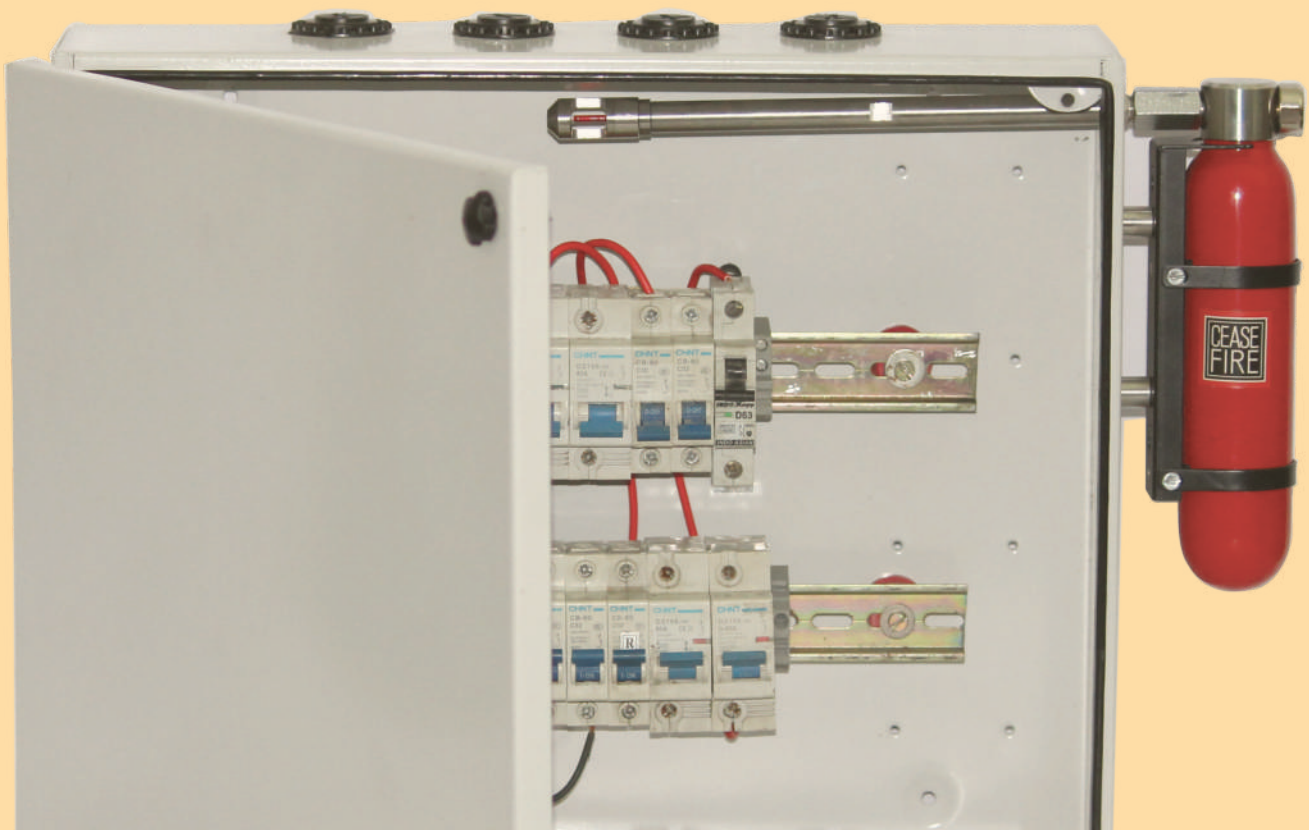


## Mini – Intuitive System

The Mini – Intuitive System is a direct suppression system which protects the micro-environment from inside. Place it inside or attach it to the inner wall of the microenvironment, and the Mini is ready to protect.

## Mini – Adaptive System

The Mini – Adaptive System is an indirect suppression system designed for those micro-environment which are too small to even accommodate a Mini, let alone other firefighting systems. In this case, the Mini container is installed outside, with its heat-sensitive glass bulb inside the micro-environment.





# FEATURES AND BENEFITS



## Ease of Use:

Being automatic, the Mini requires no prompt to start firefighting.



## Fits Anywhere:

The Mini can easily fit into the spots that are most prone to fire.



## Electronics-Friendly:

The Mini is filled with clean agent Fluoroketone that causes no damage to your electronics.



## Self-actuation:

Since the Mini is self-actuated, it spots the fire and protects even when no one is around.



## No Power Supply Required:

The Mini uses a mechanical release mechanism to start firefighting.



## Works on All Classes of Fire:

The Mini can be used on any kind of fire, making it a truly versatile firefighter.



## Protects all Micro-environments:

Available as an Intuitive or Adaptive System, the Mini protects everywhere.



## Heat-sensitive Glass Bulb:

The Mini's glass bulb acts as a heat sensor that detects a rise in surrounding temperature.



## 6 year Warranty:

The Ceasefire Mini come with 6 year warranty ensuring complete peace of mind.



## Safe on Environment:

Fluoroketone (FK) gas is among the most potent yet environment friendly solutions with a Global Warming Potential (GWP) of less than 1 and a Ozone Depletion Potential (ODP) of 0.



## Free from F-gas Regulations:

FK being outside the purview of F-gas regulation gives freedom of operation to businesses and offers a long term trade solution.



# TECHNICAL SPECIFICATIONS:

Nomenclature	Mini Intuitive 57° C Automatic Fire Ext 100gm SS SP Red	Mini Intuitive 57° C Automatic Fire Ext 200gm SS SP Red	Mini Intuitive 57° C Automatic Fire Ext 300gm SS SP Red	Mini Intuitive 57° C Automatic Fire Ext 400gm SS SP Red	Mini Intuitive 57° C Automatic Fire Ext 500gm SS SP Red
Stored Pressure / Cartridge	Stored Pressure	Stored Pressure	Stored Pressure	Stored Pressure	Stored Pressure
Agent Type	Clean Agent	Clean Agent	Clean Agent	Clean Agent	Clean Agent
Agent	Fluoroketone (FK- 5-1-12)	Fluoroketone (FK- 5-1-12)	Fluoroketone (FK- 5-1-12)	Fluoroketone (FK- 5-1-12)	Fluoroketone (FK- 5-1-12)
Throw	0.5 meters	0.5 meters	0.5 meters	0.5 meters	0.5 meters
Product Code (57°) ●	CF-001339A	CF-001341A	CF-001343A	CF-001345A	CF-001347A
Product Code (68°) ●	CF-001339B	CF-001341B	CF-001343B	CF-001345B	CF-001347B
Product Code (93°) ●	CF-001339C	CF-001341C	CF-001343C	CF-001345C	CF-001347C
Certification type	PED BSI TESTED	PED BSI TESTED	PED BSI TESTED	PED BSI TESTED	PED BSI TESTED
PED	YES	YES	YES	YES	YES
UKCA-PED	YES	YES	YES	YES	YES
Gross Weight (approx.)	0.665 Kg	0.900 kg	1.10 Kg	1.25 Kg	1.45 Kg
Net Mass (approx.)	100 Gm	200 Gm	300 Gm	400 Gm	500 Gm
Maximum Volume Covered	0.130 m <sup>3</sup>	0.260 m <sup>3</sup>	0.290 m <sup>3</sup>	0.520 m <sup>3</sup>	0.650 m <sup>3</sup>
Total Height of Fire Ext. (approx.)	184 mm	284 mm	276 mm	331 mm	386 mm
Discharge Mechanism	Automatic QBD*	Automatic QBD*	Automatic QBD*	Automatic QBD*	Automatic QBD*
Applicable On Fires	A, B, C & Electrical Started Fire	A, B, C & Electrical Started Fire	A, B, C & Electrical Started Fire	A, B, C & Electrical Started Fire	A, B, C & Electrical Started Fire
Can Construction	DEEP DRAWN AND MIG WELDED	DEEP DRAWN AND MIG WELDED	DEEP DRAWN AND MIG WELDED	DEEP DRAWN AND MIG WELDED	DEEP DRAWN AND MIG WELDED
Valve / Cap Construction	MACHINING	MACHINING	MACHINING	MACHINING	MACHINING
External Coating	EPOXY POLYESTER POWDER	EPOXY POLYESTER POWDER	EPOXY POLYESTER POWDER	EPOXY POLYESTER POWDER	EPOXY POLYESTER POWDER
Warranty In Years	6	6	6	6	6
G.A. Drawing Number	CF/SP-CA100-VR/GA/01	CF/SP-CA200-VR/GA/01	CF/SP-CA300-VR/GA/01	CF/SP-CA400-VR/GA/01	CF/SP-CA500-VR/GA/01
Working Pressure	10 / 12 Bar	10 / 12 Bar	10 / 12 Bar	10 / 12 Bar	10 / 12 Bar
Dia. Of Shell (OD)	40.0 mm	40.0 mm	50.0 mm	50.0 mm	50.0 mm
Hydrostatic Test Pressure	35Bar	35Bar	35Bar	35Bar	35Bar
Cylinder Material Spec.	SS 316L (1.4435)	SS 316L (1.4435)	SS 316L (1.4435)	SS 316L (1.4435)	SS 316L (1.4435)
Body Thickness	1.2 mm	1.2 mm	1.2 mm	1.2 mm	1.2 mm

Please check the product specifications at the time of placing your order from our website (address of which is given at the end of this catalogue). Specifications can change without notice due to our continuous R&D and product improvisation initiatives.

## \*QUARTZOID BULB KEY

● 57°C / 135°F	● 68°C / 155°F	● 79°C / 174°F	● 93°C / 200°F
● 141°C / 286°F	● 182°C / 360°F	● 227°C / 440°F	

# TECHNICAL SPECIFICATIONS:

Nomenclature	Mini Adaptive 57°C Automatic Fire Ext 100 SS SP Red with 50mm barrel	Mini Adaptive 57°C Automatic Fire Ext 100 SS SP Red with 100mm barrel	Mini Adaptive 57°C Automatic Fire Ext 100 SS SP Red with 200mm barrel	Mini Adaptive 57°C Automatic Fire Ext 200 SS SP Red with 50mm barrel	Mini Adaptive 57°C Automatic Fire Ext 200 SS SP Red with 100mm barrel
Stored Pressure / Cartridge	Stored Pressure	Stored Pressure	Stored Pressure	Stored Pressure	Stored Pressure
Agent Type	Clean Agent	Clean Agent	Clean Agent	Clean Agent	Clean Agent
Agent	Fluoroketone (FK- 5-1-12)	Fluoroketone (FK- 5-1-12)	Fluoroketone (FK- 5-1-12)	Fluoroketone (FK- 5-1-12)	Fluoroketone (FK- 5-1-12)
Throw	0.5 meters	0.5 meters	0.5 meters	0.5 meters	0.5 meters
Product Code (57°) ●	CF-001340AA	CF-001340AB	CF-001340AC	CF-001342AA	CF-001342AB
Product Code (68°) ●	CF-001340BA	CF-001340BB	CF-001340BC	CF-001342BA	CF-001342BB
Product Code (93°) ●	CF-001340CA	CF-001340CB	CF-001340CC	CF-001342CA	CF-001342CB
Certification type	PED BSI TESTED	PED BSI TESTED	PED BSI TESTED	PED BSI TESTED	PED BSI TESTED
PED	YES	YES	YES	YES	YES
UKCA-PED	YES	YES	YES	YES	YES
Gross Weight (approx.)	0.695 Kg	0.738 Kg	0.822 Kg	0.935 kg	0.970 Kg
Net Mass (approx.)	100 Gm	100 Gm	100 Gm	200 Gm	200 Gm
Maximum Volume Covered	0.130 m <sup>3</sup>	0.130 m <sup>3</sup>	0.130 m <sup>3</sup>	0.260 m <sup>3</sup>	0.260 m <sup>3</sup>
Total Height of Fire Ext. (approx.)	148 mm	148 mm	148 mm	248 mm	248 mm
Discharge Mechanism	Automatic QBD*	Automatic QBD*	Automatic QBD*	Automatic QBD*	Automatic QBD*
Applicable On Fires	A, B, C & Electrical Started Fire	A, B, C & Electrical Started Fire	A, B, C & Electrical Started Fire	A, B, C & Electrical Started Fire	A, B, C & Electrical Started Fire
Can Construction	DEEP DRAWN AND MIG WELDED	DEEP DRAWN AND MIG WELDED	DEEP DRAWN AND MIG WELDED	DEEP DRAWN AND MIG WELDED	DEEP DRAWN AND MIG WELDED
Valve / Cap Construction	MACHINING	MACHINING	MACHINING	MACHINING	MACHINING
Internal Coating	NO	NO	NO	NO	NO
External Coating	EPOXY POLYESTER POWDER	EPOXY POLYESTER POWDER	EPOXY POLYESTER POWDER	EPOXY POLYESTER POWDER	EPOXY POLYESTER POWDER
Warranty In Years	6	6	6	6	6
Working Pressure	10 / 12 Bar	10 / 12 Bar	10 / 12 Bar	10 / 12 Bar	10 / 12 Bar
Dia. Of Shell (OD)	40 mm	40 mm	40 mm	50 mm	50 mm
Hydrostatic Test Pressure	35 Bar	35 Bar	35 Bar	35 Bar	35 Bar
Cylinder Material Spec.	SS 316L (1.4435)	SS 316L (1.4435)	SS 316L (1.4435)	SS 316L (1.4435)	SS 316L (1.4435)
Body Thickness	1.2 mm	1.2 mm	1.2 mm	1.2 mm	1.2 mm

Please check the product specifications at the time of placing your order from our website (address of which is given at the end of this catalogue). Specifications can change without notice due to our continuous R&D and product improvisation initiatives.

## \*QUARTZOID BULB KEY

● 57°C / 135°F

● 68°C / 155°F

● 79°C / 174°F

● 93°C / 200°F

● 141°C / 286°F

● 182°C / 360°F

● 227°C / 440°F

# TECHNICAL SPECIFICATIONS:

Nomenclature	Mini Adaptive 57°C Automatic Fire Ext 200 SS SP Red with 200mm barrel	Mini Adaptive 57°C Automatic Fire Ext 300 SS SP Red with 50mm barrel	Mini Adaptive 57°C Automatic Fire Ext 300 SS SP Red with 100mm barrel	Mini Adaptive 57°C Automatic Fire Ext 300 SS SP Red with 200mm barrel	Mini Adaptive 57°C Automatic Fire Ext 400 SS SP Red with 50mm barrel
Stored Pressure / Cartridge	Stored Pressure	Stored Pressure	Stored Pressure	Stored Pressure	Stored Pressure
Agent Type	Clean Agent	Clean Agent	Clean Agent	Clean Agent	Clean Agent
Agent	Fluoroketone (FK- 5-1-12)	Fluoroketone (FK- 5-1-12)	Fluoroketone (FK- 5-1-12)	Fluoroketone (FK- 5-1-12)	Fluoroketone (FK- 5-1-12)
Throw	0.5 meters	0.5 meters	0.5 meters	0.5 meters	0.5 meters
Product Code (57°) <span style="color: orange;">●</span>	CF-001342AC	CF-001344AA	CF-001344AB	CF-001344AC	CF-001346AA
Product Code (68°) <span style="color: red;">●</span>	CF-001342BC	CF-001344BA	CF-001344BB	CF-001344BC	CF-001346BA
Product Code (93°) <span style="color: green;">●</span>	CF-001342CC	CF-001344CA	CF-001344CB	CF-001344CC	CF-001346CA
Certification	PED BSI TESTED	PED BSI TESTED	PED BSI TESTED	PED BSI TESTED	PED BSI TESTED
PED	Yes	Yes	Yes	Yes	Yes
UKCA-PED	Yes	Yes	Yes	Yes	Yes
Gross Weight (approx.)	1.05 Kg	1.07 Kg	1.12 Kg	1.20 Kg	1.27 Kg
Net Mass (approx.)	200 Gm	300 Gm	300 Gm	300 Gm	400 Gm
Maximum Volume Covered	0.260 m <sup>3</sup>	0.290 m <sup>3</sup>	0.290 m <sup>3</sup>	0.290 m <sup>3</sup>	0.520 m <sup>3</sup>
Total Height of Fire Ext. (approx.)	248 mm	240 mm	240 mm	240 mm	295 mm
Discharge Mechanism	Automatic QBD*	Automatic QBD*	Automatic QBD*	Automatic QBD*	Automatic QBD*
Applicable On Fires	A, B, C & Electrical Started Fire	A, B, C & Electrical Started Fire	A, B, C & Electrical Started Fire	A, B, C & Electrical Started Fire	A, B, C & Electrical Started Fire
Can Construction	DEEP DRAWN AND MIG WELDED	DEEP DRAWN AND MIG WELDED	DEEP DRAWN AND MIG WELDED	DEEP DRAWN AND MIG WELDED	DEEP DRAWN AND MIG WELDED
Valve / Cap Construction	MACHINING	MACHINING	MACHINING	MACHINING	MACHINING
Internal Coating	NO	NO	NO	NO	NO
External Coating	EPOXY POLYESTER POWDER	EPOXY POLYESTER POWDER	EPOXY POLYESTER POWDER	EPOXY POLYESTER POWDER	EPOXY POLYESTER POWDER
Warranty In Years	6	6	6	6	6
Working Pressure	10 / 12 Bar	10 / 12 Bar	10 / 12 Bar	10 / 12 Bar	10 / 12 Bar
Dia. Of Shell (OD)	40 mm	50 mm	50 mm	50 mm	50 mm
Hydrostatic Test Pressure	35 Bar	35 Bar	35 Bar	35 Bar	35 Bar
Cylinder Material Spec.	SS 316L (1.4435)	SS 316L (1.4435)	SS 316L (1.4435)	SS 316L (1.4435)	SS 316L (1.4435)
Body Thickness	1.2 mm	1.2 mm	1.2 mm	1.2 mm	1.2 mm

Please check the product specifications at the time of placing your order from our website (address of which is given at the end of this catalogue). Specifications can change without notice due to our continuous R&D and product improvisation initiatives.

## \*QUARTZOID BULB KEY

● 57°C / 135°F

● 68°C / 155°F

● 79°C / 174°F

● 93°C / 200°F

● 141°C / 286°F

● 182°C / 360°F

● 227°C / 440°F

# TECHNICAL SPECIFICATIONS:

Nomenclature	Mini Adaptive 57°C Automatic Fire Ext 400 SS SP Red with 100mm barrel	Mini Adaptive 57°C Automatic Fire Ext 400 SS SP Red with 200mm barrel	Mini Adaptive 57°C Automatic Fire Ext 500 SS SP Red with 50mm barrel	Mini Adaptive 57°C Automatic Fire Ext 500 SS SP Red with 100mm barrel	Mini Adaptive 57°C Automatic Fire Ext 500 SS SP Red with 200mm barrel
Stored Pressure / Cartridge	Stored Pressure	Stored Pressure	Stored Pressure	Stored Pressure	Stored Pressure
Agent Type	Clean Agent	Clean Agent	Clean Agent	Clean Agent	Clean Agent
Agent	Fluoroketone (FK- 5-1-12)	Fluoroketone (FK- 5-1-12)	Fluoroketone (FK- 5-1-12)	Fluoroketone (FK- 5-1-12)	Fluoroketone (FK- 5-1-12)
Throw	0.5 meters	0.5 meters	0.5 meters	0.5 meters	0.5 meters
Product Code (57°) ●	CF-001346AB	CF-001346AC	CF-001348AA	CF-001348AB	CF-001348AC
Product Code (68°) ●	CF-001346BB	CF-001346BC	CF-001348BA	CF-001348BB	CF-001348BC
Product Code (93°) ●	CF-001346CB	CF-001346CC	CF-001348CA	CF-001348CB	CF-001348CC
Certification type	PED BSI TESTED	PED BSI TESTED	PED BSI TESTED	PED BSI TESTED	PED BSI TESTED
PED	Yes	Yes	Yes	Yes	Yes
UKCA-PED	Yes	Yes	Yes	Yes	Yes
Gross Weight (approx.)	1.30 Kg	1.39 Kg	1.46 Kg	1.50 Kg	1.58 Kg
Net Mass (approx.)	400 Gm	400 Gm	500 Gm	500 Gm	500 Gm
Maximum Volume Covered	0.520 m <sup>3</sup>	0.520 m <sup>3</sup>	0.650 m <sup>3</sup>	0.650 m <sup>3</sup>	0.650 m <sup>3</sup>
Total Height of Fire Ext. (approx.)	295 mm	295 mm	350 mm	350 mm	350 mm
Discharge Mechanism	Automatic QBD*	Automatic QBD*	Automatic QBD*	Automatic QBD*	Automatic QBD*
Applicable On Fires	A, B, C & Electrical Started Fire	A, B, C & Electrical Started Fire	A, B, C & Electrical Started Fire	A, B, C & Electrical Started Fire	A, B, C & Electrical Started Fire
Can Construction	DEEP DRAWN AND MIG WELDED	DEEP DRAWN AND MIG WELDED	DEEP DRAWN AND MIG WELDED	DEEP DRAWN AND MIG WELDED	DEEP DRAWN AND MIG WELDED
Valve / Cap Construction	MACHINING	MACHINING	MACHINING	MACHINING	MACHINING
Internal Coating	NO	NO	NO	NO	NO
External Coating	EPOXY POLYESTER POWDER	EPOXY POLYESTER POWDER	EPOXY POLYESTER POWDER	EPOXY POLYESTER POWDER	EPOXY POLYESTER POWDER
Warranty In Years	6	6	6	6	6
Working Pressure	10 / 12 Bar	10 / 12 Bar	10 / 12 Bar	10 / 12 Bar	10 / 12 Bar
Dia. Of Shell (OD)	50 mm	50 mm	50 mm	50 mm	50 mm
Hydrostatic Test Pressure	35 Bar	35 Bar	35 Bar	35 Bar	35 Bar
Cylinder Material Spec.	SS 316L (1.4435)	SS 316L (1.4435)	SS 316L (1.4435)	SS 316L (1.4435)	SS 316L (1.4435)
Body Thickness	1.2 mm	1.2 mm	1.2 mm	1.2 mm	1.2 mm

Please check the product specifications at the time of placing your order from our website (address of which is given at the end of this catalogue). Specifications can change without notice due to our continuous R&D and product improvisation initiatives.

## \*QUARTZOID BULB KEY

● 57°C / 135°F

● 68°C / 155°F

● 79°C / 174°F

● 93°C / 200°F

● 141°C / 286°F

● 182°C / 360°F

● 227°C / 440°F

# APPLICATION AREAS

The Mini is built to protect electrical cabinets of all kinds in homes, offices, factories, schools and hospitals.



## Offices and Data Centres:

With several workstations and computers, some running round-the-clock, offices and data centres are at a high risk of fire. A Mini sitting unobtrusively inside the office's busy electrical cabinet can detect a fire and extinguish it before it destroys your workplace and data. Besides, being powered by clean agent gas, it doesn't cause any discomfort and lets your staff continue working.



## Homes:

Electrical cabinets and MCBs (Miniature Circuit Breakers) are blind spots in most houses, as the only time you look at them is when there is no power or when a switch trips. The Mini is built precisely for such an environment. Place it inside the cabinet and forget about it. Whether it's a short circuit or overheating, the Mini will take care of it.



## Factories:

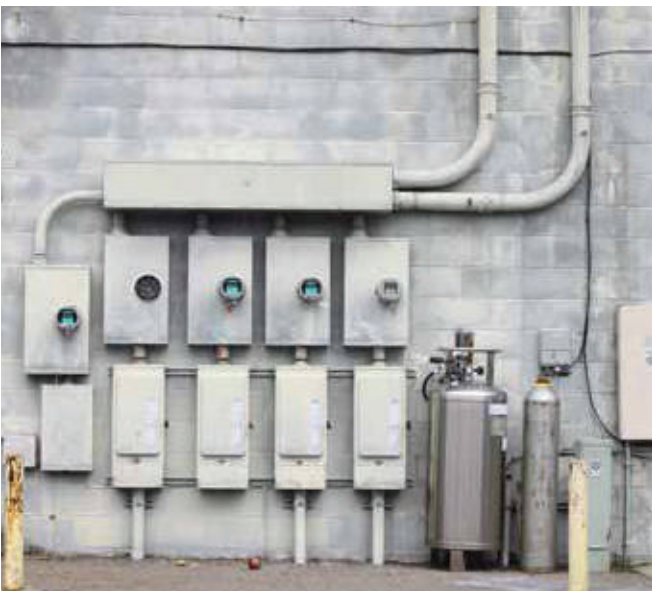
Old wiring. Irregular maintenance. A huge consumption of electricity. Electrical cabinets in factories are hotspots of fire, literally. Our tech team will help you determine how many Minis are required to protect the electrical cabinet in your factory so you can stop a fire before it ruins your business.



### Schools:

Schools also consume a humungous amount of power, making their electrical cabinets high risk areas. Add to that the responsibility of managing thousands of students and suddenly, it has all the

makings of a major mishap. This is why auto detection of fires is important. And nothing does it better than Minis placed in the electrical cabinets.



### Hospitals:

At any point of time, hundreds of patients undergo treatment in a hospital. There are complex scanning machines and labs to test these patients. Put together, all this leads to large power consumption. Minis cut the panic involved in a fire situation by automatically killing fires in the hospital's electrical cabinets.

**CEASEFIRE FK RANGE**





# ATOM X

## PRE-ENGINEERED RETROFITTABLE FIRE SUPPRESSION SYSTEM

Development in the economy has resulted in the mushrooming of the modern structures. Each of these premises could be unique in their fire risks in terms of occupancy, kind of activities being carried, flammable materials stored or purely due to the high value of the assets present at these places.

Many turn to specialized suppression systems for ideal fire safety of their premises, often overlooking the system requirements like structural changes needed to accommodate the system, dedicated space to store the massive agent containers and the downtime associated with the installation.

Understanding the evolving demands of unique infrastructures and businesses, Ceasefire presents the next generation specialized fire suppression technology. Ceasefire Atom X doesn't demand any structural change neither consumes the floor space nor leads to downtime, as this innovative system is mounted on the ceiling of the space.

Designed with smart and sensitive features, it minimizes the possibility of false activation and safeguards the premises.

The system is an automated smart network of ceiling mounted agent containers, an array of detection devices and a control panel.

**bsi.**  
Tested



### SIZES AVAILABLE:

Atom X	2 KG	5 KG	10 KG	15 KG
--------	------	------	-------	-------

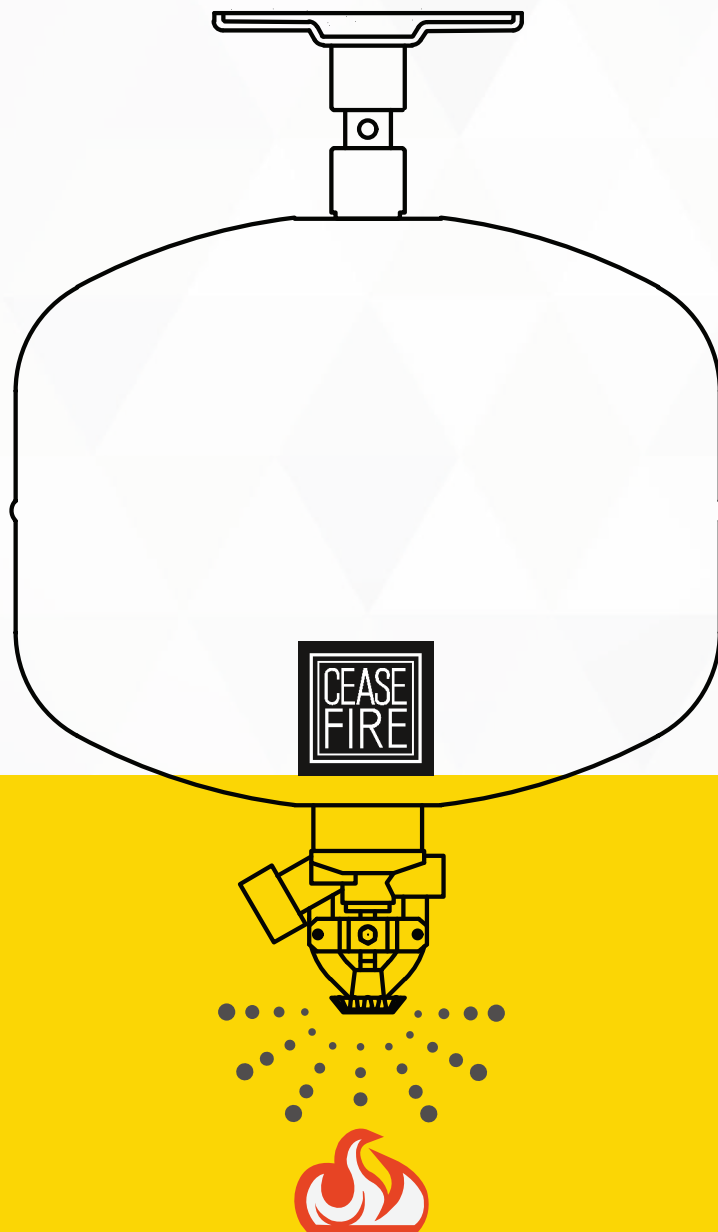
# HOW THE SYSTEM WORKS

The flagship feature of the Atom X system is its intelligent fire detection and actuation module. The detection module of Atom X can be configured using a wide variety of detectors depending upon the risk hazards of the premises.

These detectors may include smoke detectors, beam detectors, heat detectors, or others depending upon the need of the premises and all interact with a central control panel.

The Atom X actuates on the principle of cross-zoning. Only when two or more detectors from two separate zones confirm the fire episode to the control panel, does the panel send an activation signal to the system. The activation signal is sent to the Metron Actuator of Atom X in the form of an electrical impulse. On receiving this electrical

impulse a metal pin is fired inside the actuator that breaks the glass vial placed at the discharge point of Atom X units, triggering the discharge of the agent. What makes the Atom X truly versatile is that all Atom X units are triggered simultaneously to achieve total flooding results.



# FEATURES AND BENEFITS



## Classification:

Works on class A, B, C fires and fires involving electrically-charged devices. Effective on a wide range of flammable and combustible materials



## Self-actuated:

Does not require any power supply and will function normally in the event of a power outage.



## Electronics-Friendly:

Fluoroketone variants is suitable for securing high-value sensitive equipment.



## Value For Money:

Cost effective solution to Conventional Suppression Systems.



## 24-hour Protection:

Automatic detection and actuation controls ensure fire protection is always 'on'.



## Flexible Design:

Flexible tubing allows protection in areas that are difficult to access and may not be able to accommodate any other means of detection.



## Customized Firefighting Protection:

The system can be customised to suit the requirement of any kind of premises.



## Rugged System:

Can withstand even harsh conditions where other types of detection systems might be rendered inadequate.



## Safe on Environment:

Fluoroketone (FK) gas is among the most potent yet environment friendly solutions with a Global Warming Potential (GWP) of less than 1 and a Ozone Depletion Potential (ODP) of 0.



## Free from F-gas Regulations:

FK being outside the purview of F-gas regulation gives freedom of operation to businesses and offers a long term trade solution.



# TECHNICAL SPECIFICATIONS:

Nomenclature	Atom X - 2Kg Automatic Suppression System	Atom X - 5Kg Automatic Suppression System	Atom X - 10Kg Automatic Suppression System	Atom X - 15Kg Automatic Suppression System
Size	2kg	5kg	10kg	15kg
Product Code	CF-001349A	CF-001350A	CF-001351A	CF-001352A
Pressure Type	Stored Pressure	Stored Pressure	Stored Pressure	Stored Pressure
Agent	Fluoroketone (FK-5-1-12)	Fluoroketone (FK-5-1-12)	Fluoroketone (FK-5-1-12)	Fluoroketone (FK-5-1-12)
Applicable on fires	A, B, C & Electrical Started Fire	A, B, C & Electrical Started Fire	A, B, C & Electrical Started Fire	A, B, C & Electrical Started Fire
Certification	PED BSI TESTED	PED BSI TESTED	PED BSI TESTED	PED BSI TESTED
PED	Yes	Yes	Yes	Yes
Gross Weight (approx.)	5.41 kg	10.14 kg	18.14 kg	25.42 kg
Net Mass (approx.)	2 kg	5 kg	10 kg	15 kg
Maximum Volume Covered	3 m <sup>3</sup>	7.5 m <sup>3</sup>	15 m <sup>3</sup>	22.5 m <sup>3</sup>
Height of Fire Ext.(approx) with base	261 mm	332.5 mm	362.5 mm	442 mm
Actuation Mechanism	Thermal & Metron Actuator	Thermal & Metron Actuator	Thermal & Metron Actuator	Thermal & Metron Actuator
Can Construction	Deep Drawn and MIG Welded	Deep Drawn and MIG Welded	Deep Drawn and MIG Welded	Deep Drawn and MIG Welded
Valve / Cap Construction	Forging & Machining	Forging & Machining	Forging & Machining	Forging & Machining
External Coating	Epoxy Polyester Powder	Epoxy Polyester Powder	Epoxy Polyester Powder	Epoxy Polyester Powder
Warranty In Years	1	1	1	1
Helium Leak Detection Testing	Yes	Yes	Yes	Yes
Working Pressure	10 Bar	10 Bar	10 Bar	10 Bar
Dia. Of Shell (OD)	175 mm	240 mm	300 mm	300 mm
Operating Temperature	-30° C to +60° C	-30° C to +60° C	-30° C to +60° C	-30° C to +60° C
Hydrostatic Test Pressure	35 Bar	35 Bar	35 Bar	35 Bar
Cylinder Material Spec.	Steel CR2(DC01)	Steel CR2(DC01)	Steel CR2(DC01)	Steel CR2(DC01)
Body Thickness	2 mm	1.6 mm	2 mm	2 mm

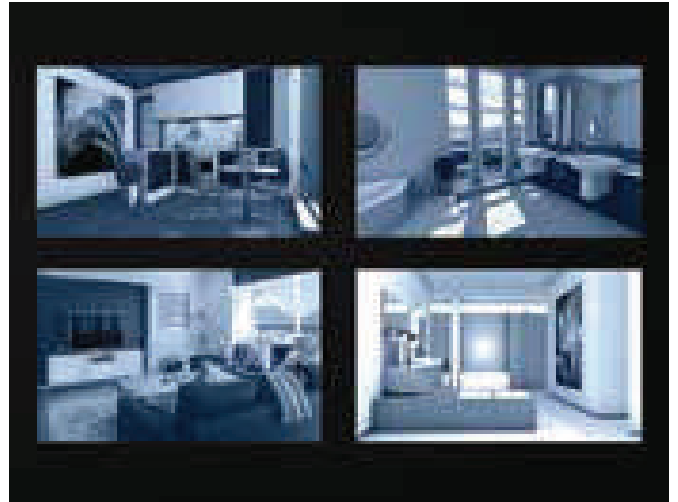
Please check the product specifications at the time of placing your order from our website (address of which is given at the end of this catalogue). Specifications can change without notice due to our continuous R&D and product improvisation initiatives.

\*\*Verify the coverage with the Ceasefire Design Cell (CDC) at the time of order.

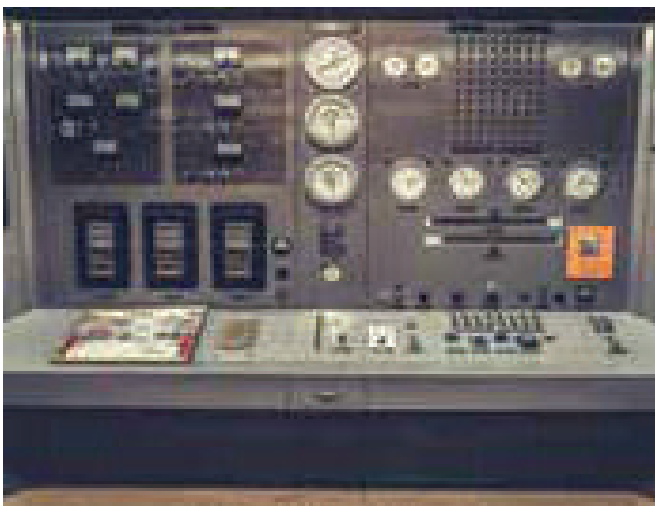
# APPLICATION AREAS



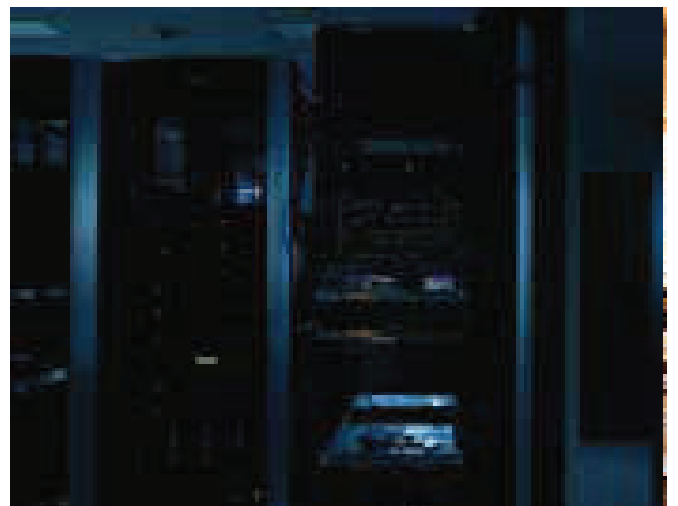
Electrical Control Room



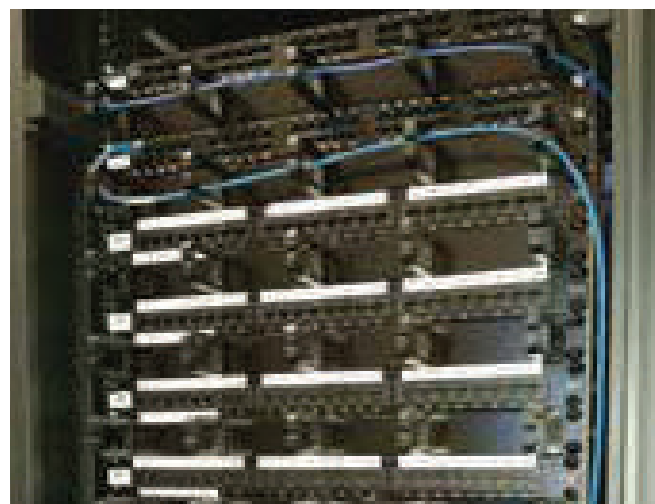
BMS Control Room



Site Control Room



Server Room For Small Offices



Server Racks



Battery Room

## CEASEFIRE DESIGN CELL

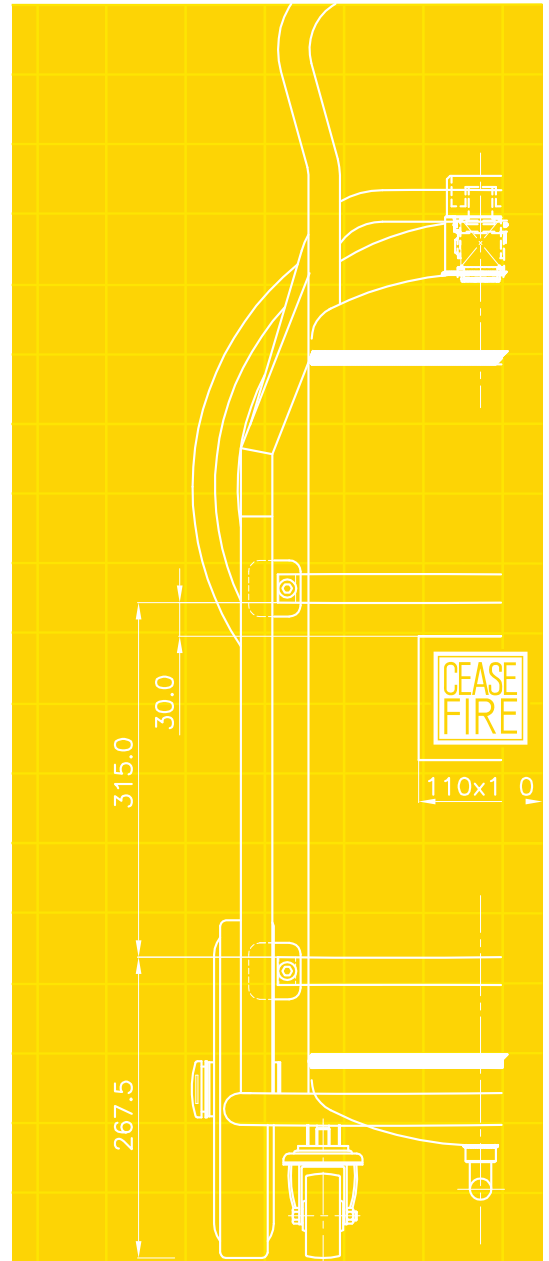
No two premises are alike. By offering the most exible system congurations in the industry, Ceasere provides the most efcient protection for facilities. Believing that the most effective re solutions are the ones that are customised according to the unique characteristics of the area being protected, Ceasere has established the Ceasere Design Cell (CDC).

Functioning as the single touch point for all safety and security needs, CDC is manned by re experts and managers with years of experience in re safety under their belts. As a part of Ceasere's 360 degree protection solution, the Ceasere Technical Survey team visits your facility and conducts a detailed study to understand its vulnerabilities and requirements. They survey the premises, work out requirements, and the number of TetraQuad's required based on re threats in the room.

Once it has been nalised, Ceasere's expert Installation Team oversee installation and testing. The Ceasere Team also train you and your staff to use the re safety system. Post installation, the Service Team maintains and services the system.

### Benefits:

- An exhaustive planning process, executed by engineers with years of experience.
- State-of-the-art solutions and products in association with world leaders.
- Design and installation of your TetraQuad overseen by professionals, ensuring delivery of a high quality, reliable system.



## CEASEFIRE TODAY



360° lifesaving re and safety solutions. More than 3,000 new customers a month. 2 lakh blue chip clients. A product sold every 61 seconds. A life saved every 5 minutes. Presence in over 300 cities and towns. Backed by a team of more than 2,000. 400 lifesaving products – from green re extinguishers that can tackle any kind of re to a state-of-the-art 3-tier security system that's one of the most foolproof systems in the world – Ceasere has it all. We're equipped and ready to protect your premises. 24x7. 4x4.



## Ceasefire Industries Private Limited

B1/ H1, 2nd Floor, Mohan Cooperative  
Industrial Estate, Mathura Rd, New Delhi - 110044

Tel: 011-4184 6800 | Call our Free Hotline : 1800 120 3473 / +91 9540 666 666



Scan the QR code  
to visit our website

Website : [www.ceasefire.in](http://www.ceasefire.in)

Follow us on:



TO PLACE AN ORDER, PLEASE CONTACT: