

**JUST WHAT YOU  
NEED IN A  
FIRE ESCAPE SYSTEM:  
SMART THINKING.**







**W**hen a fire starts, and the lights go out, and dense smoke fills the air, panic can spread like wildfire.

Imagine such a situation where people are densely packed into an enclosed area: cinemas, malls, hospitals, hotels, office complexes. For all those on the premises, it's a recipe for disaster.

What is most needed at this point is a clear path to safety.

And some clear thinking.

Ceasefire now offers you both.



## CEASEFIRE'S FIRESCAPE EMERGENCY LIGHTING SYSTEM. LOW VOLTAGE. HIGH IQ.

---

The fact that FIREscape runs on unique addressable technology allows you to programme, control and test each individual sign in the system. A graphic interface lets you view the entire system at a glance. If there's a sign that's out of order, you can identify and fix it immediately. An internal control system has been included with the system to constantly control the

condition of the lights, LEDs and batteries.

If necessary, the system will provide specific information on the status, either locally on a keypad or by transferring it to the control centre of the service provider using an IP or GSM network.



## THE GREEN REVOLUTION

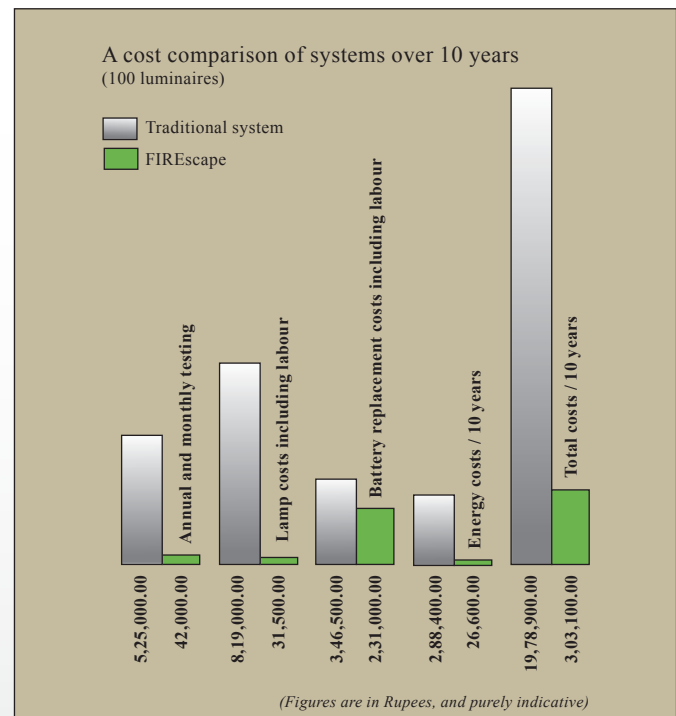
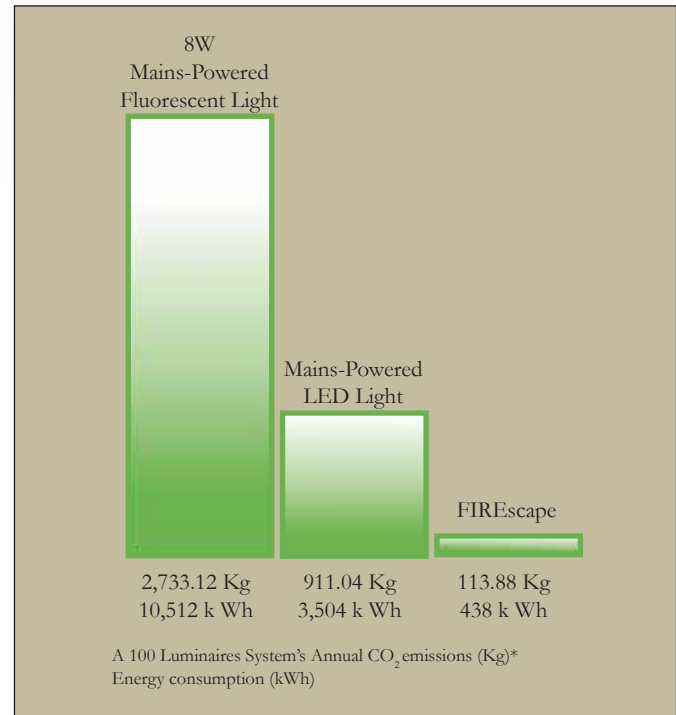
Traditional fluorescent lights need to be connected to the main power supply, and consume a great deal of energy. FIREscape technology, on the other hand, uses low-voltage LED technology, which cuts power consumption significantly and emits only a negligible amount of Carbon Dioxide. Putting this into numbers gives a clearer picture:

A FIREscape exit luminaire consumes less than 0.5W, including the power loss. A similar 8W fluorescent light exit luminaire will consume approximately 12W. When compared to 230V LED lights, FIREscape products save more than 50% energy. The lower energy consumption directly correlates with lower CO<sub>2</sub> emissions. For example, replacing 100 230V fluorescent exit luminaires with FIREscape LED-based exit lights would reduce your CO<sub>2</sub> emissions by 2,100 Kg annually.

## A PENNY SAVED IS A PENNY EARNED

Ceasefire's FIREscape system functions on a luminaire-specific backup power source. Because it utilises low-voltage LED lights, the need for higher power supply is eliminated. It can be installed using standard fire alarm cabling, which can be done at 40% of the cost of heavy-duty fire resistant cabling. This greatly cuts expenditure on the material and electricity required to set up and run the system.

Moreover, FIREscape is constructed from entirely recyclable material and doesn't have an adverse impact on the environment.

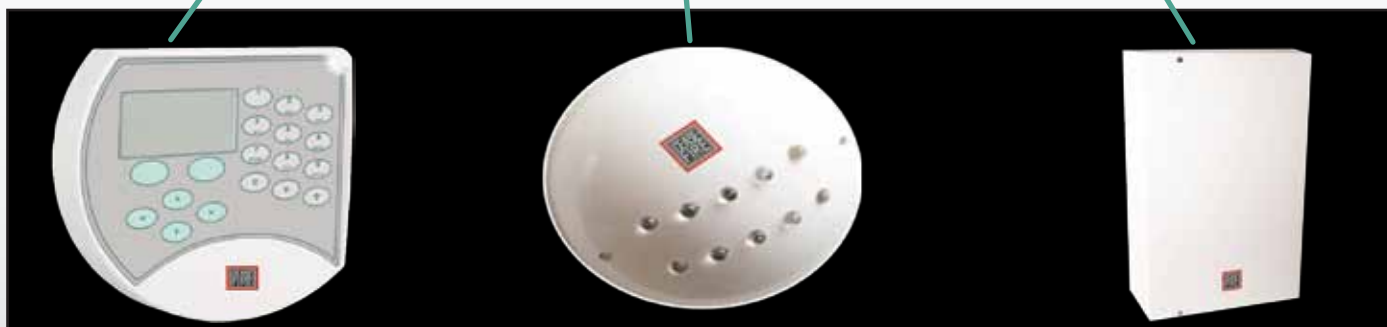


## THE INTELLIGENT ILLUMINATOR

The FIREscape system runs on specially designed internal control software, which controls and monitors the condition of the lights, LEDs and batteries. In case of a malfunction in even a single luminaire at any point in the system, it provides a warning and relevant information, either locally or over a GSM / IP network. Because each luminaire uses multiple LEDs, even if one were to fail, the sign

would still be clearly visible through smoke.

The system has been designed such that, if there is a power outage and power supply from the mains is cut off, it automatically switches to battery-mode. An independent battery ensures that every luminaire can function even if the main control panel is damaged or the cables have been severed.



## UNFAILING RELIABILITY

---

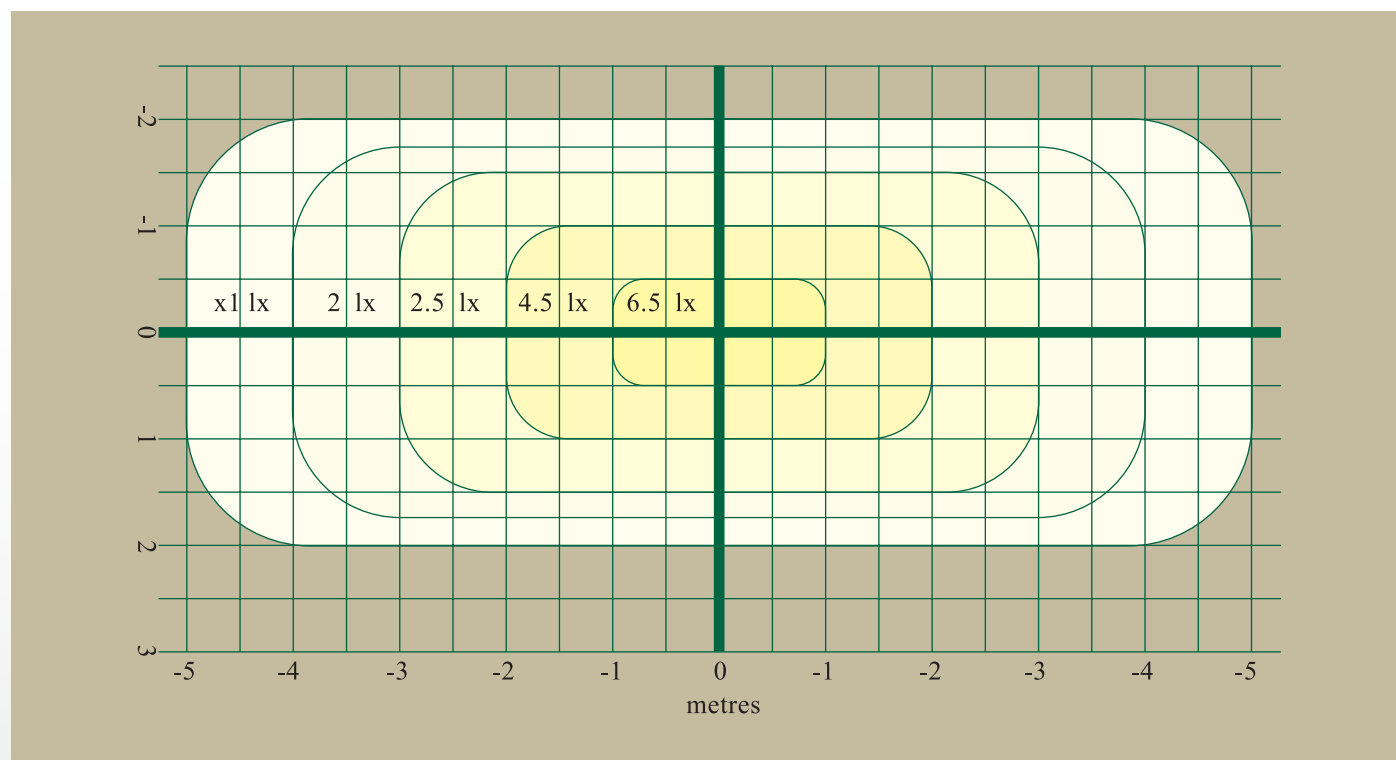
All FIREscape systems come equipped with battery backups, ensuring that luminaires function even if power supply from the mains is cut off, the control panel is damaged or the bus cable is severed.

The FIREscape system is set up in a 'tree structure', which means that any branch can be isolated from the main cable for any floor in a building.

## THE IDEAL SOLUTION

---

Unlike traditional emergency lights which illuminate like a spotlight, FIREscape LED route lights illuminate in a wide, uniform rectangular path, making them ideal for corridors and designated escape routes. The ideal installation gap for LED-based route lights is 10 metres, at a height of 3 metres. Depending on the height of the ceiling and the gap between two lights, the brightness of the light is between 1 and 6.5 lux.



## THE PRODUCT - AN OVERVIEW

---

The FIREscape product is easy to install and requires very little maintenance. Once the cables have been laid, lights can be installed in a matter of seconds. The core of the FIREscape emergency lighting system is the addressable control panel. A total of 254 exit signs and route lights can be connected to the two

addressable lines leading out from the control panel. Both exit signs and route lights utilise LED technology, which guarantees a life of 10 years. The unique 'Flex-it' hinge system allows the signs to be either wall or ceiling mounted.

## HOW IT WORKS – THE BRAIN CENTRE

---

The brain of the FIREscape system is the FIREscape-2 control centre. It supplies operational voltage to the light units during normal conditions, and constantly tests and monitors the equipment in the system. All the monitored information (up to 500 events) is

saved in the control centre's memory and can be accessed at a later time.

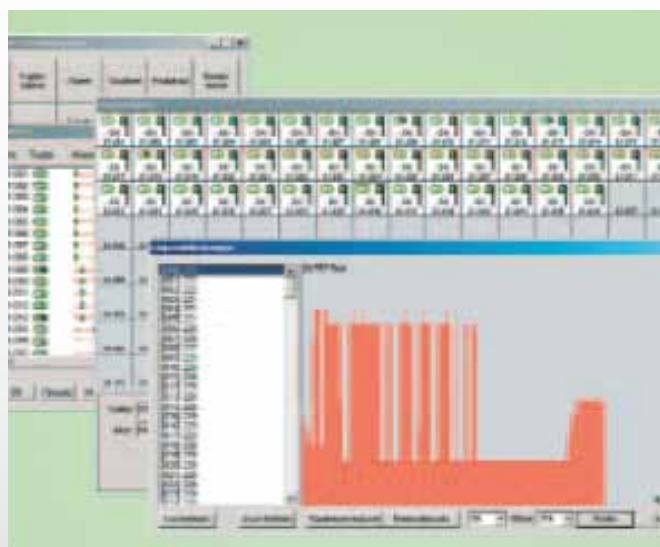
## The FIREscape Software

---

FIREscape-IMP is the installation and programming software that makes the entire system tick. This proprietary program controls the system's every move.

Here are just some of the many complex functions this software performs:

- Remote setting of light levels
- Control over the status of the system
- Remote setting of input/output parameters
- Identifying and reporting faults and malfunctions
- Uploading and downloading data
- Creating status reports for various parts of the entire system





## FIRESCAPE-2 ADDRESSABLE CONTROL PANEL



The FIREscape-2 Addressable Control Panel is the central point of control for an entire emergency lighting system. The primary features of this control panel are:

- Two bus channels, each of which can accommodate 127 exit signs and / or route lights.
- It supplies operational voltage to the lights under normal conditions.
- It constantly tests and monitors the equipment on the entire system.
- It stores all the monitored data, which can be accessed using the FIREscape-KP keypad.

### SPECIFICATIONS

Number of lights / signs supported	254
Connection voltage	29 V.A/C (150 VA)
Nominal voltage	12 V.D/C
Internal batteries capacity	7.2 Ah
I/O outputs	1 relay output and 7 digital outputs
Modem connection	RS-232
User panel connection	RS-485/9600 baud
Event memory	500 events
Dimensions (mm)	295 (W) x 475 (H) x 100 (D)



## THE PRODUCT RANGE

---

The LED-based exit lights with 'Flex-it' hinges are available in two variants – FIREscape-40 and FIREscape-20. These are controlled and monitored remotely by the FIREscape-2 Control Panel.

The information being fed to the central control panel can also be accessed from various locations using the FIREscape-KP Lighting System Keypad.

### FIREscape-40

---

FIREscape-40 is an addressable LED-based exit light which is clearly visible up to a distance of 40 metres. The exit light's hinged cup contains the address unit

and backup battery. It mounts to the standard YBN-R/3 mounting base.



#### SPECIFICATIONS

Material	Fire-resistant ABS plastic
Fire class	UI94 V-O
Viewing distance	40m
Models available	FIREscape-40L (arrow to left) FIREscape-40R (arrow to right) FIREscape-40D (arrow down)
Operation time	1-3 hours
Dimensions of sign (mm)	300 (W) x 226 (H) x 23 (D)
Distance from wall (if wall mounted)	75 mm (including 8 mm for YBN-R/3 base)
Distance from ceiling (if ceiling mounted)	295 mm (including 8 mm for YBN-R/3 base)

## FIREscape-20

SPECIFICATIONS	
Material	Fire-resistant ABS plastic
Fire class	UI94 V-O
Viewing distance	20m
Models available	FIREscape-20L (arrow to left) FIREscape-20R (arrow to right) FIREscape-20D (arrow down)
Operation time	1-3 hours
Dimensions of sign (mm)	200 (W) x 46 (H) x 23 (D)
Distance from wall (if wall mounted)	75 mm (including 8 mm for YBN-R/3 base)
Distance from ceiling (if ceiling mounted)	217 mm (including 8 mm for YBN-R/3 base)

This addressable LED-based exit light is clearly visible up to 20 metres. Its hinged cup contains the address unit and backup battery. It mounts to the standard YBN-R/3 mounting base.



## FIREscape-DL Addressable Downlighter

The FIREscape-DL is an LED-based addressable route light / downlighter featuring 10 LEDs. The unit's cup fixture contains the address unit and the back-up battery. The unit has been designed to easily fit onto

the standard sensor base, the YBN-R/3, and is manufactured in the same colour as the rest of the FIREscape range of products.

SPECIFICATIONS	
Casing material	Fire-resistant ABS plastic
Fire class	UI94 V-O
Viewing distance	40m
Operation time	1-3 hours
Dimensions	99.7Ø x 50 (H) (including 8 mm for YBN-R/3 base)



## FIREscape-SL ADDRESSABLE STEP-LUMINAIRE

The FIREscape-SL is an LED-based addressable step lighting unit ideal for lighting up stairwells and to indicate changes in floor levels.

### SPECIFICATIONS

Material	Fire-resistant PC+ABS plastic
Fire class	UI94 V-0
Operation time	1-3 hours
Dimensions	80 (W) x 80 (H) x 12 (D)



## FIREscape-KP

The FIREscape-KP Lighting System Keypad is a control panel keypad for use with the FIREscape-2 control panel. The central control panel can be operated and interrogated with this compact backlit LCD graphical display. It can be used to monitor system status, including battery charge and malfunctions in the LEDs. A total of 8 keypad units can be supported on the complete system.

### SPECIFICATIONS

Nominal voltage	12 V.D/C
Display	LCD graphical display (128 x 64 pixels)
Display viewing area (mm)	60.0 x 32.5
Dimensions (mm)	147 (W) x 144 (H) x 29 (D)



## FIRESCAPE ACCESSORIES

---



■ **FIREscape-PSU:**

A bus-controlled power supply which operates the FIREscape system.



■ **FIREscape-35V:**

A transformer for the FIREscape-2 Emergency Light control panel.



■ **FIREscape-IO:**

An I/O unit linked to the bus channel of the FIREscape-DL Emergency Light Control Panel, from which it receives its operational voltage. The unit links start switches and phase monitors to the FIREscape system.



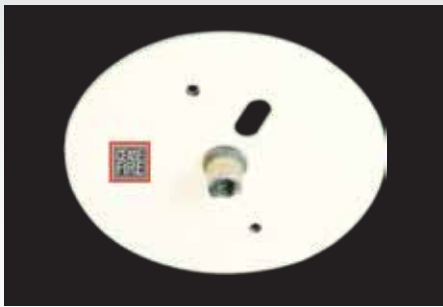
■ **FIREscape-PM:**

A phase-control unit which monitors various zones of the FIREscape panels using FIREscape-IO. In the event of a power outage, this unit instructs the luminaires to begin functioning on their backup batteries.



■ **FIREscape-FS:**

A 'flag-support' mount for the FIREscape-40 and FIREscape-20 emergency lighting signs.



■ **FIREscape-CS:**

A ceiling-fitted mount for the FIREscape-40 and FIREscape-20 emergency lighting signs.



■ **FIREscape-BAT:**

A rechargeable Polymer Li-Ion (Lithium Ion) battery backup for luminaires and exit signs across the FIREscape range. It is built sturdily enough to function normally even in temperatures as low as  $-25^{\circ}\text{C}$ , making it ideal for cold facilities.



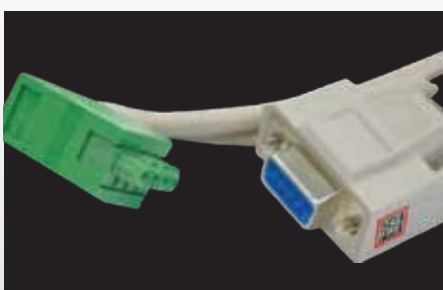
■ **YBN-R/3:**

A common mounting base to which any luminaire or exit sign in the FIREscape range can be attached. It is equipped with the facility of remote indication despite being electronics-free. Its unique 'twist-on connection' makes it a convenient mount to install luminaires and emergency exit signs even in completely constructed buildings.



■ **TCH-B100:**

A convenient, easy-to-use handheld Addressable Programmer to address the FIREscape range of luminaires and exit signs. It is light, robust and runs on a single PP3-sized battery, which lasts for over 8000 operations / address settings.



■ **FIREscape-CAB:**

A cable to connect the FIREscape-2 Emergency Light Control Panel to a PC / laptop.

## MAINTENANCE

---

The EN50172 security system standard has emphasised the importance of the operational condition of emergency lighting systems. Ordinary systems are required to be tested at least once a month. The FIREscape emergency lighting system control panel, on the other hand constantly, and automatically, tests and

monitors the functioning of all its components across the facility.

All recorded information is stored in the control panel's internal memory and any malfunctions are promptly reported via the keypad. The result: A smart emergency lighting system that maintains itself.





To get 360 degrees of protection, call our toll free hotline: 1800 11 3473, or SMS FIRE to 53030.

CEASEFIRE INDUSTRIES LTD. A-3, Ground Floor, Sector - 4, Noida - 201301 Tel.: 0120-4255800 Fax: 0120-4255801 | [www.ceasefire.in](http://www.ceasefire.in)

